

## DEMOGRAPHIC INFORMATION

Student Enrollment

Student Statistics

Student Diversity

Socio-Economic Disadvantaged Students

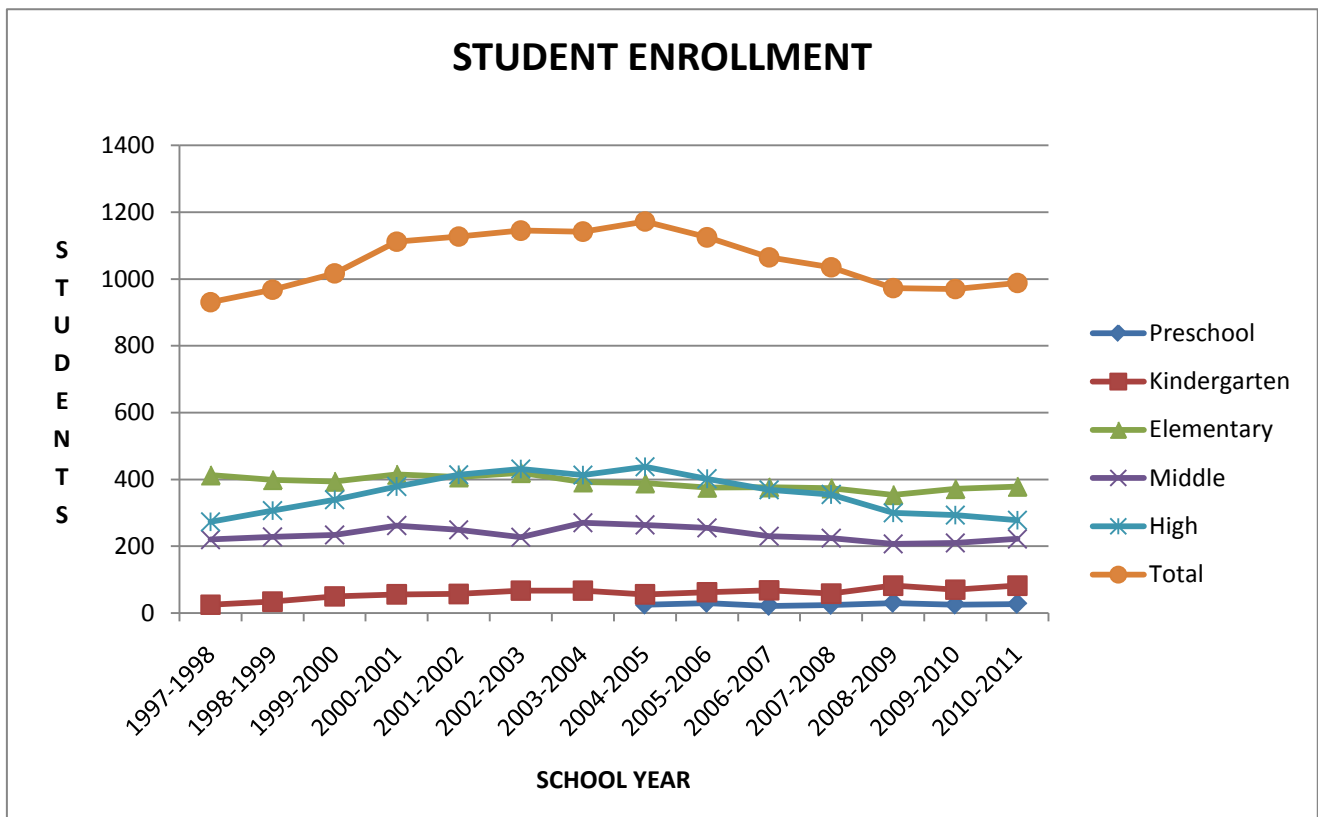
Limited English Proficiency Students

Title 1 Students

Special Education Students

Home School & Charter School Students

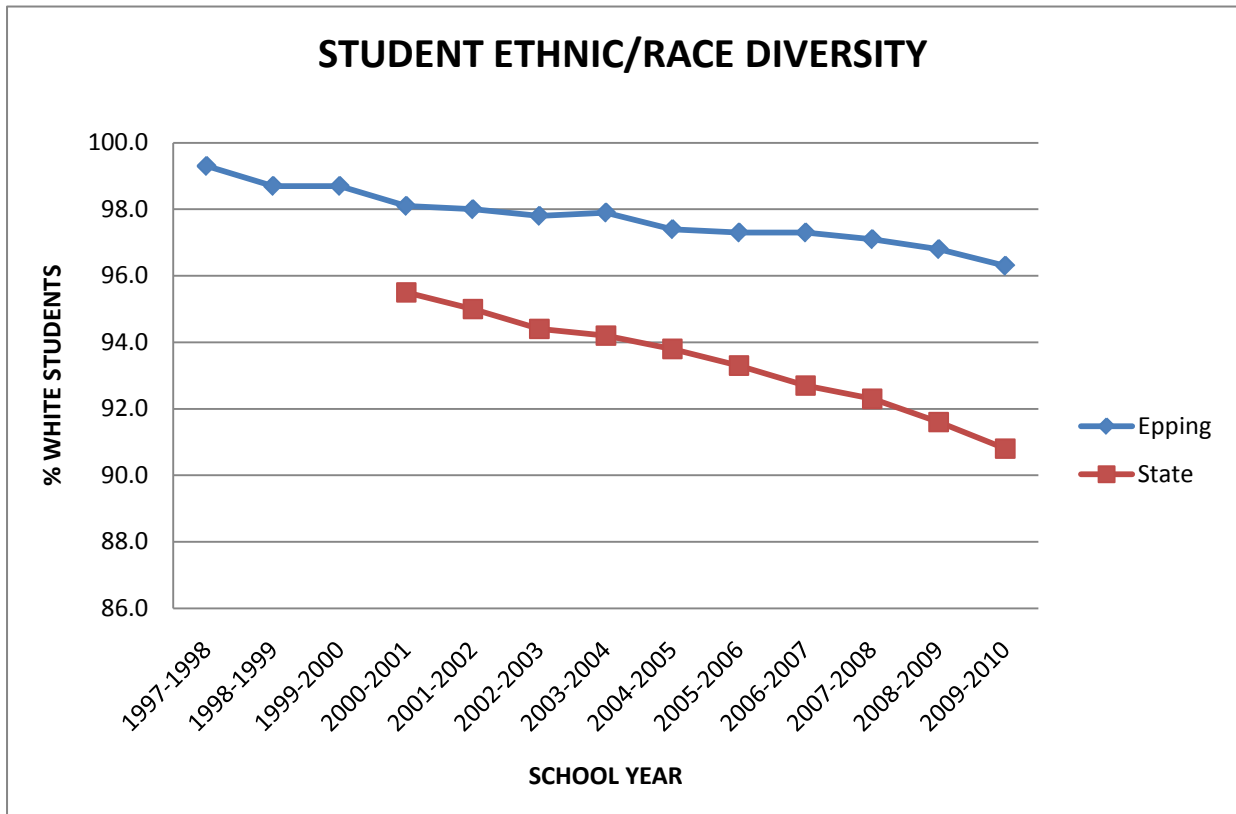
EPPING SCHOOL DISTRICT  
STUDENT ENROLLMENT\*



<u>SCHOOL YEAR</u>	<u>Preschool</u>	<u>Kindergarten</u>	<u>Elementary</u>	<u>Middle</u>	<u>High</u>	<u>Total</u>
1997-1998		25	413	220	273	931
1998-1999		34	399	228	307	968
1999-2000		50	394	234	339	1017
2000-2001		56	415	262	379	1112
2001-2002		57	407	249	414	1127
2002-2003		67	420	227	431	1145
2003-2004		67	392	270	413	1142
2004-2005	25	56	389	264	438	1172
2005-2006	30	62	376	255	402	1125
2006-2007	21	68	377	230	369	1065
2007-2008	24	58	374	224	355	1035
2008-2009	30	82	354	207	300	973
2009-2010	25	70	372	210	293	970
2010-2011	27	82	379	222	278	988

\* District fall enrollments (NH Department of Education)  
The 2010-2011 enrollment is based on October 2010 enrollment.

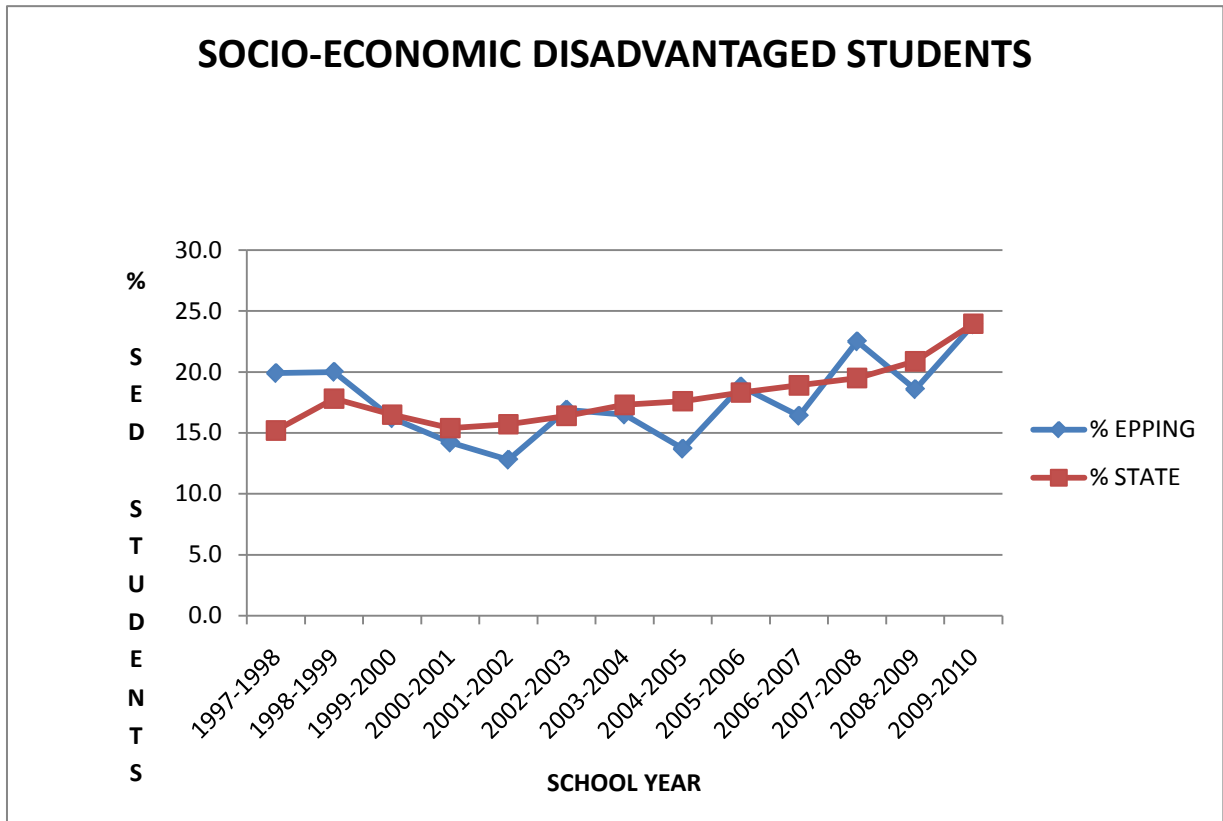
EPPING SCHOOL DISTRICT  
 STUDENT DEMOGRAPHICS - DIVERSITY\*



<u>SCHOOL YEAR</u>	<u>% White Epping</u>	<u>% White State</u>
1997-1998	99.3	
1998-1999	98.7	
1999-2000	98.7	
2000-2001	98.1	95.5
2001-2002	98.0	95.0
2002-2003	97.8	94.4
2003-2004	97.9	94.2
2004-2005	97.4	93.8
2005-2006	97.3	93.3
2006-2007	97.3	92.7
2007-2008	97.1	92.3
2008-2009	96.8	91.6
2009-2010	96.3	90.8

\* Race/Ethnic Enrollments (NH Department of Education)

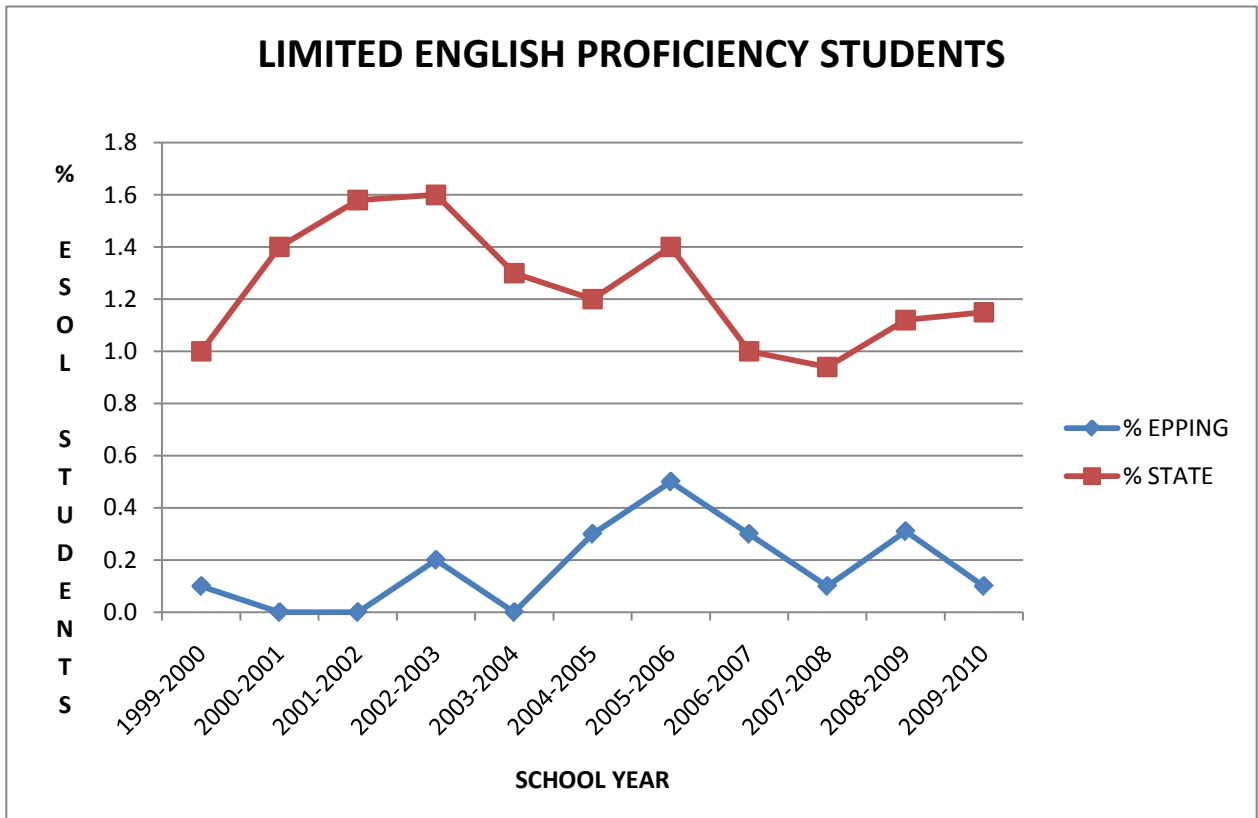
EPPING SCHOOL DISTRICT  
 STUDENT DEMOGRAPHICS - SOCIO-ECONOMIC DISADVANTAGED STUDENTS\*



<u>SCHOOL YEAR</u>	<u>% EPPING</u>	<u>% STATE</u>
1997-1998	19.9	15.2
1998-1999	20.0	17.8
1999-2000	16.2	16.5
2000-2001	14.2	15.4
2001-2002	12.8	15.7
2002-2003	16.9	16.4
2003-2004	16.5	17.3
2004-2005	13.7	17.6
2005-2006	18.8	18.3
2006-2007	16.4	18.9
2007-2008	22.5	19.5
2008-2009	18.6	20.9
2009-2010	23.9	24.0

\* Free/Reduced School Lunch Eligibility (NH Department of Education)

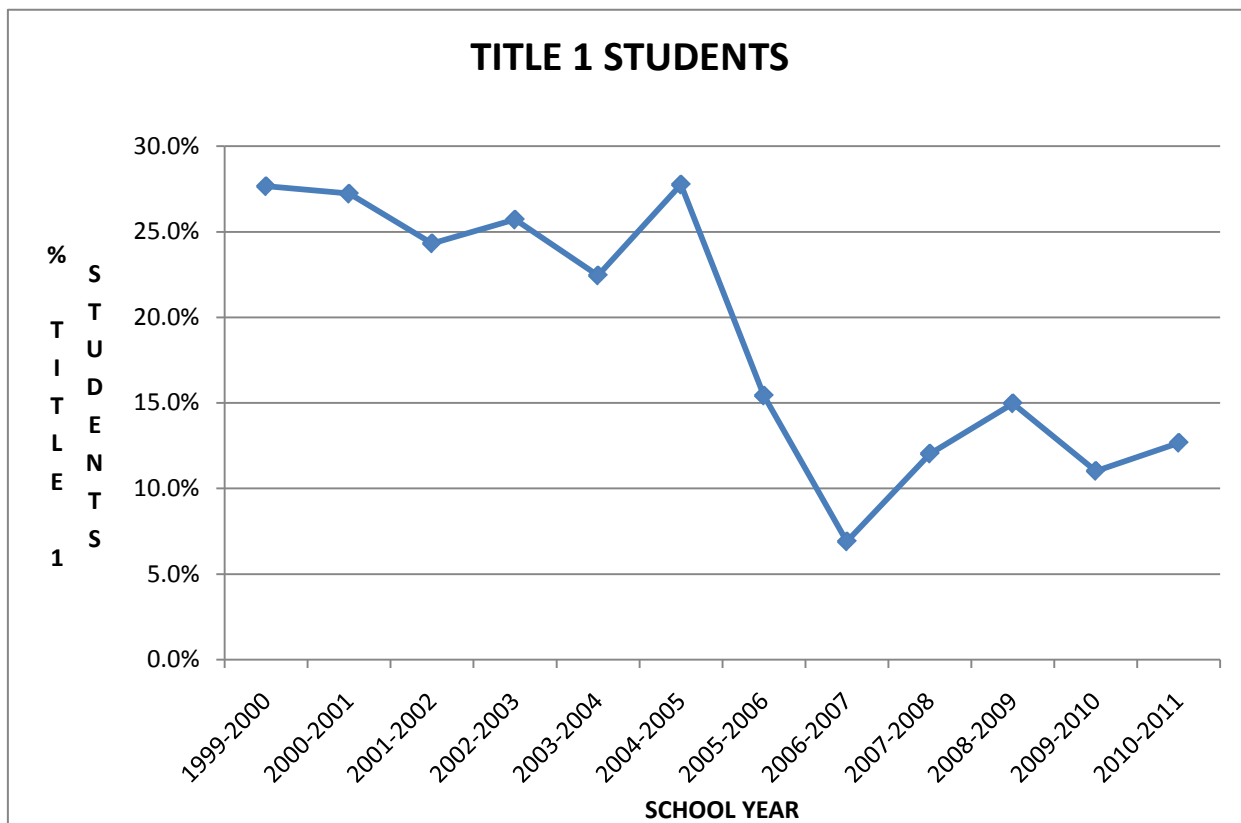
EPPING SCHOOL DISTRICT  
 STUDENT DEMOGRAPHICS - LIMITED ENGLISH PROFICIENCY STUDENTS\*



<u>SCHOOL YEAR</u>	<u>% EPPING</u>	<u>% STATE</u>
1999-2000	0.1	1.0
2000-2001	0.0	1.4
2001-2002	0.0	1.6
2002-2003	0.2	1.6
2003-2004	0.0	1.3
2004-2005	0.3	1.2
2005-2006	0.5	1.4
2006-2007	0.3	1.0
2007-2008	0.1	0.9
2008-2009	0.3	1.1
2009-2010	0.1	1.2

\* Limited English Proficiency Enrollment (NH Department of Education)

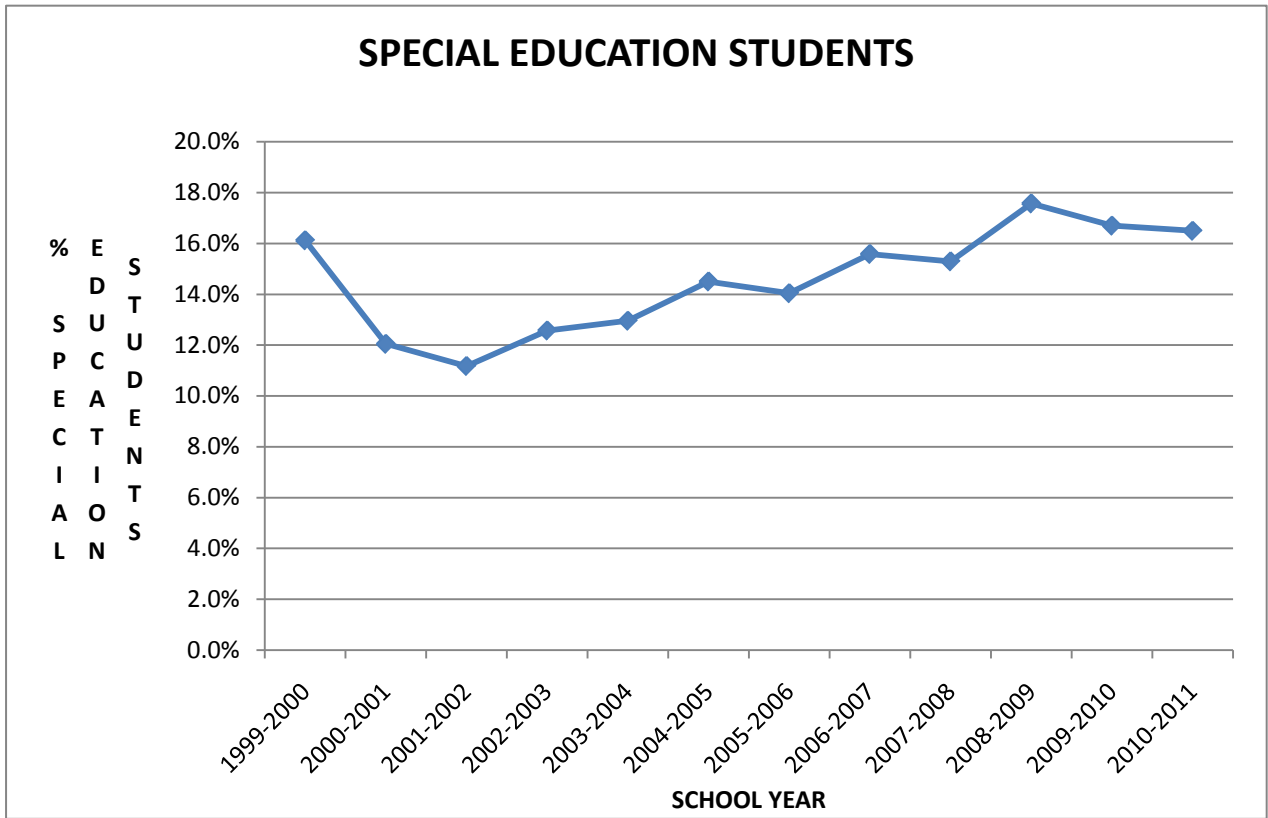
EPPING SCHOOL DISTRICT  
STUDENT DEMOGRAPHICS - TITLE 1 STUDENTS\*



<u>SCHOOL YEAR</u>	<u>STUDENTS</u>	<u>% TITLE 1</u>
1999-2000	109	27.7%
2000-2001	113	27.2%
2001-2002	99	24.3%
2002-2003	108	25.7%
2003-2004	88	22.4%
2004-2005	108	27.8%
2005-2006	58	15.4%
2006-2007	26	6.9%
2007-2008	45	12.0%
2008-2009	53	15.0%
2009-2010	41	11.0%
2010-2011	48	12.7%

\* Title 1 students (Epping Title 1 Program)  
The federal guidelines for Title 1 changed in 2006-2007.

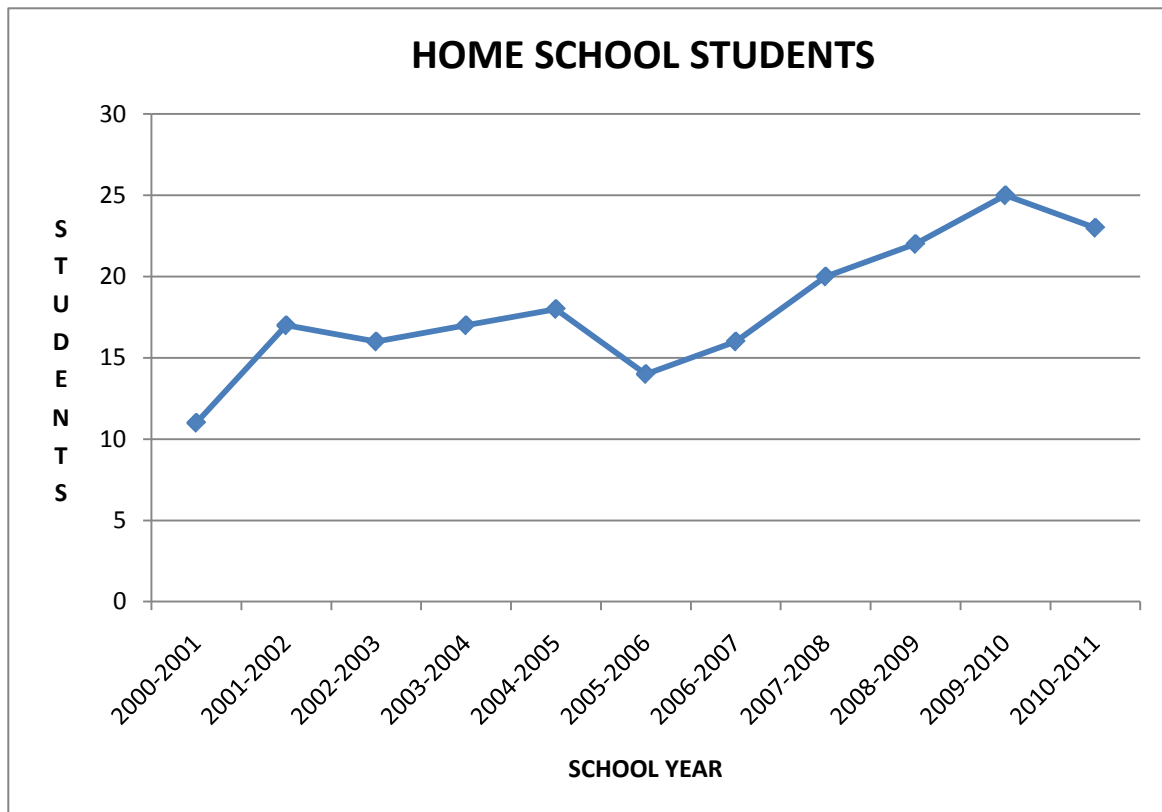
EPPING SCHOOL DISTRICT  
 STUDENT DEMOGRAPHICS - SPECIAL EDUCATION STUDENTS\*



<u>SCHOOL YEAR</u>	<u>STUDENTS</u>	<u>% SPECIAL EDUCATION</u>
1999-2000	164	16.1%
2000-2001	134	12.1%
2001-2002	126	11.2%
2002-2003	144	12.6%
2003-2004	148	13.0%
2004-2005	170	14.5%
2005-2006	158	14.0%
2006-2007	166	15.6%
2007-2008	158	15.3%
2008-2009	171	17.6%
2009-2010	162	16.7%
2010-2011	163	16.5%

\* Special education students (Epping Special Education Program)

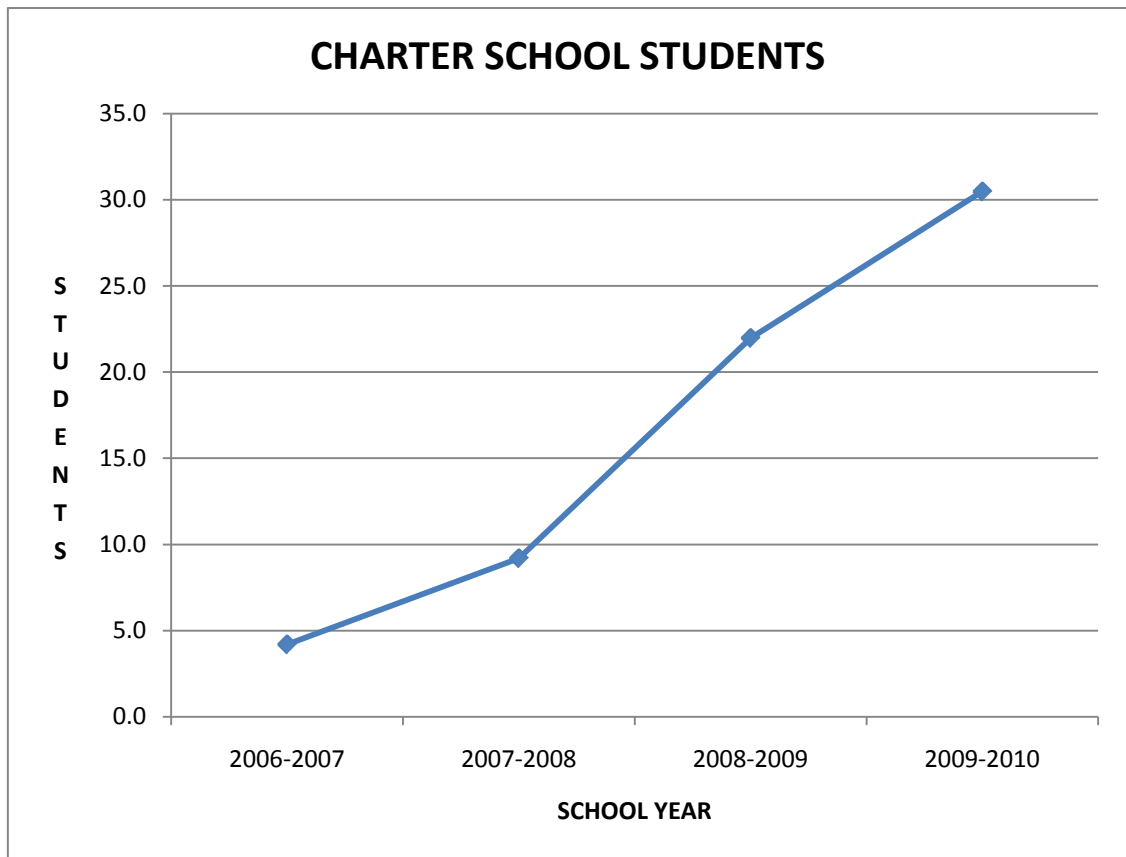
EPPING SCHOOL DISTRICT  
HOME SCHOOL STUDENTS



<u>SCHOOL YEAR</u>	<u>HOME SCHOOL STUDENTS*</u>
2000-2001	11
2001-2002	17
2002-2003	16
2003-2004	17
2004-2005	18
2005-2006	14
2006-2007	16
2007-2008	20
2008-2009	22
2009-2010	25
2010-2011	23

\* General Fall Report District Level Home Schooled Count (NH Department of Education)

EPPING SCHOOL DISTRICT  
 CHARTER SCHOOL STUDENTS\*



<u>SCHOOL YEAR</u>	<u>SEACOAST</u>	<u>GREAT BAY</u>	<u>COCHECO</u>	<u>VIRTUAL</u>	<u>TOTAL</u>
2006-2007	1.9	0.3	2.0	0.0	4.2
2007-2008	2.0	2.6	3.5	1.1	9.2
2008-2009	9.2	7.8	5.0	0.0	22.0
2009-2010	13.7	13.0	3.0	0.8	30.5

	<u>ELEM</u>	<u>MIDDLE</u>	<u>HIGH</u>
Seacoast Charter School	X	X	
Great Bay eLearning Charter School		X	X
Cocheco Arts and Technology Charter Academy			X
Virtual Learning Academy Charter School		X	X

\* End of Year Determination Report (NH Department of Education)

## EDUCATIONAL INFORMATION

Adequate Yearly Progress (AYP)  
per State Assessment Test

NECAP Reading Proficiency

NECAP Mathematics Proficiency

NECAP Writing Proficiency

NECAP Science Proficiency

Advanced Placement

SAT

Student Post-Secondary Attendance

Student Entering Armed Forces

Annual Student Dropouts

EPPING SCHOOL DISTRICT  
ADEQUATE YEARLY PROGRESS PER STATE ASSESSMENT TEST\*

ELEMENTARY SCHOOL

<u>AYP</u> <u>Year</u>	<u>Test</u> <u>Year</u>	<u>Test</u>	<u>School Year</u>	<u>Reading</u>	<u>Mathematics</u>	<u>SINI**</u>
2004	2003	NHEIPA	2003-2004	Yes	Yes	
2005	2004	No test	2004-2005			
2006	2005	NECAP	2005-2006	Yes	Yes	
2007	2006	NECAP	2006-2007	No (4)	No (4)	
2008	2007	NECAP	2007-2008	Yes	Yes	
2009	2008	NECAP	2008-2009	No (4)	No (4)	
2010	2009	NECAP	2009-2010	Yes	No (4)	Math
2011	2010	NECAP	2010-2011	Yes	Yes	Math

MIDDLE SCHOOL

<u>AYP</u> <u>Year</u>	<u>Test</u> <u>Year</u>	<u>Test</u>	<u>School Year</u>	<u>Reading</u>	<u>Mathematics</u>	<u>SINI**</u>
2004	2003	NHEIPA	2003-2004	No (4)	Yes	
2005	2004	No test	2004-2005			
2006	2005	NECAP	2005-2006	No (1,3,4)	No (1-4)	Reading
2007	2006	NECAP	2006-2007	Yes	No (3)	Reading & Math
2008	2007	NECAP	2007-2008	Yes	No (4)	Math
2009	2008	NECAP	2008-2009	No (4)	No (4)	Math
2010	2009	NECAP	2009-2010	Yes	Yes	Math
2011	2010	NECAP	2010-2011	No (4)	No (3-4)	Math

HIGH SCHOOL

<u>AYP</u> <u>Year</u>	<u>Test</u> <u>Year</u>	<u>Test</u>	<u>School Year</u>	<u>Reading</u>	<u>Mathematics</u>	<u>SINI**</u>
2004	2003	NHEIPA	2003-2004	No (4)	Yes	
2005	2004	NHEIPA	2004-2005	No (4)	No (4)	Reading
2006	2005	NHEIPA	2005-2006	Yes	Yes	Reading
2007	2006	No test	2006-2007			
2008	2007	NECAP	2007-2008	Yes	Yes	
2009	2008	NECAP	2008-2009	Yes	Yes	
2010	2009	NECAP	2009-2010	No (3)	Yes	
2011	2010	NECAP	2010-2011	Yes	No (1-3)	

DISTRICT

<u>AYP</u>	<u>Test</u>				
<u>Year</u>	<u>Year</u>	<u>School Year</u>	<u>Reading</u>	<u>Mathematics</u>	<u>DINI***</u>
2004	2003	2003-2004	Yes	Yes	
2005	2004	2004-2005	No	Yes	
2006	2005	2005-2006	No	Yes	Reading
2007	2006	2006-2007	Yes	Yes	Reading
2008	2007	2007-2008	Yes	Yes	
2009	2008	2008-2009	No	Yes	
2010	2009	2009-2010	Yes	Yes	
2011	2010	2010-2011	Yes	Yes	

Subgroup Key

- 1 - whole school
- 2 - white students
- 3 - economically disadvantaged students
- 4 - educational disability students

\* Reported by NH Department of Education

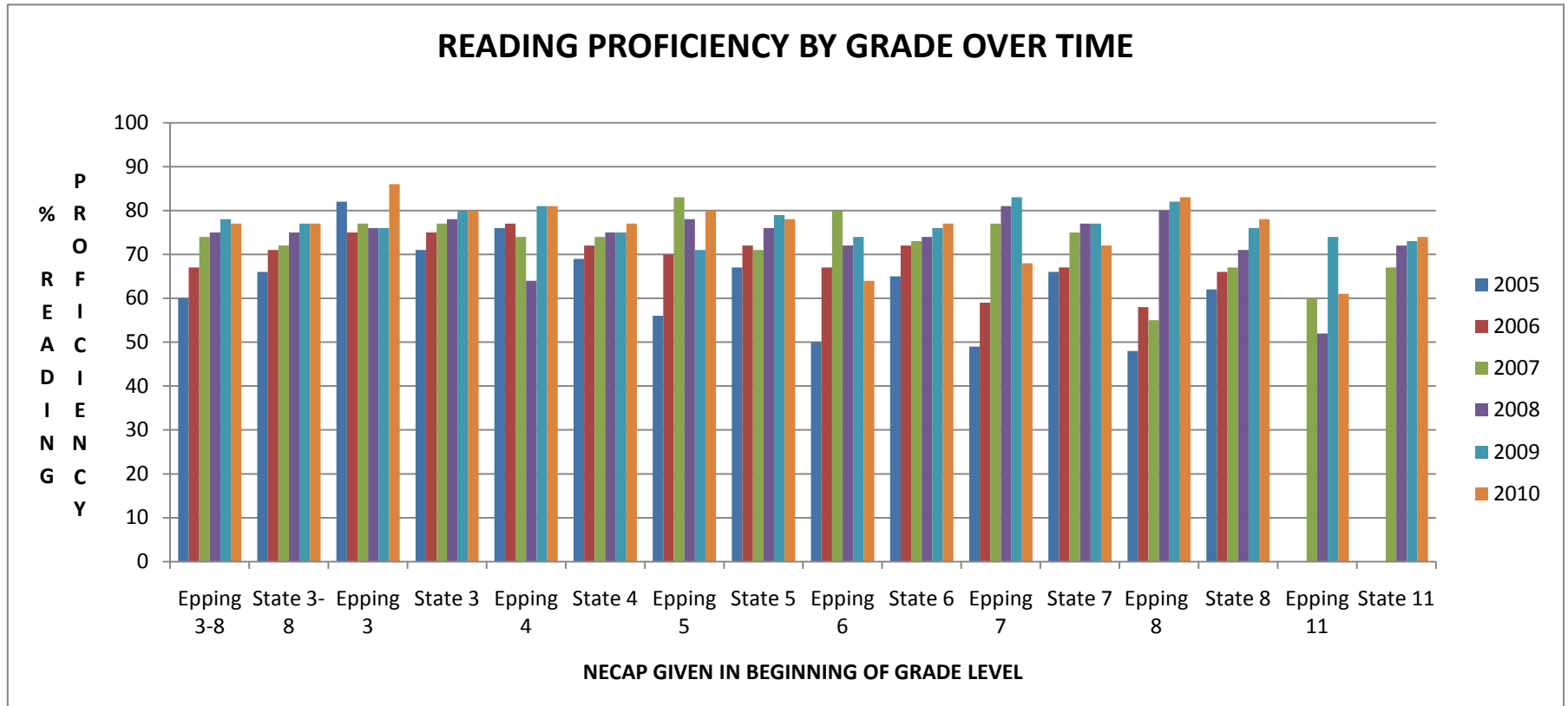
\*\* SINI - School in need of improvement

\*\*\* DINI - District in need of improvement

EPPING SCHOOL DISTRICT  
 READING RESULTS PER NECAP\*

\* Year is the year the NECAP test is taken. The NECAP assesses student learning for the prior year.

**GRADES 3 TO 8 and 11**



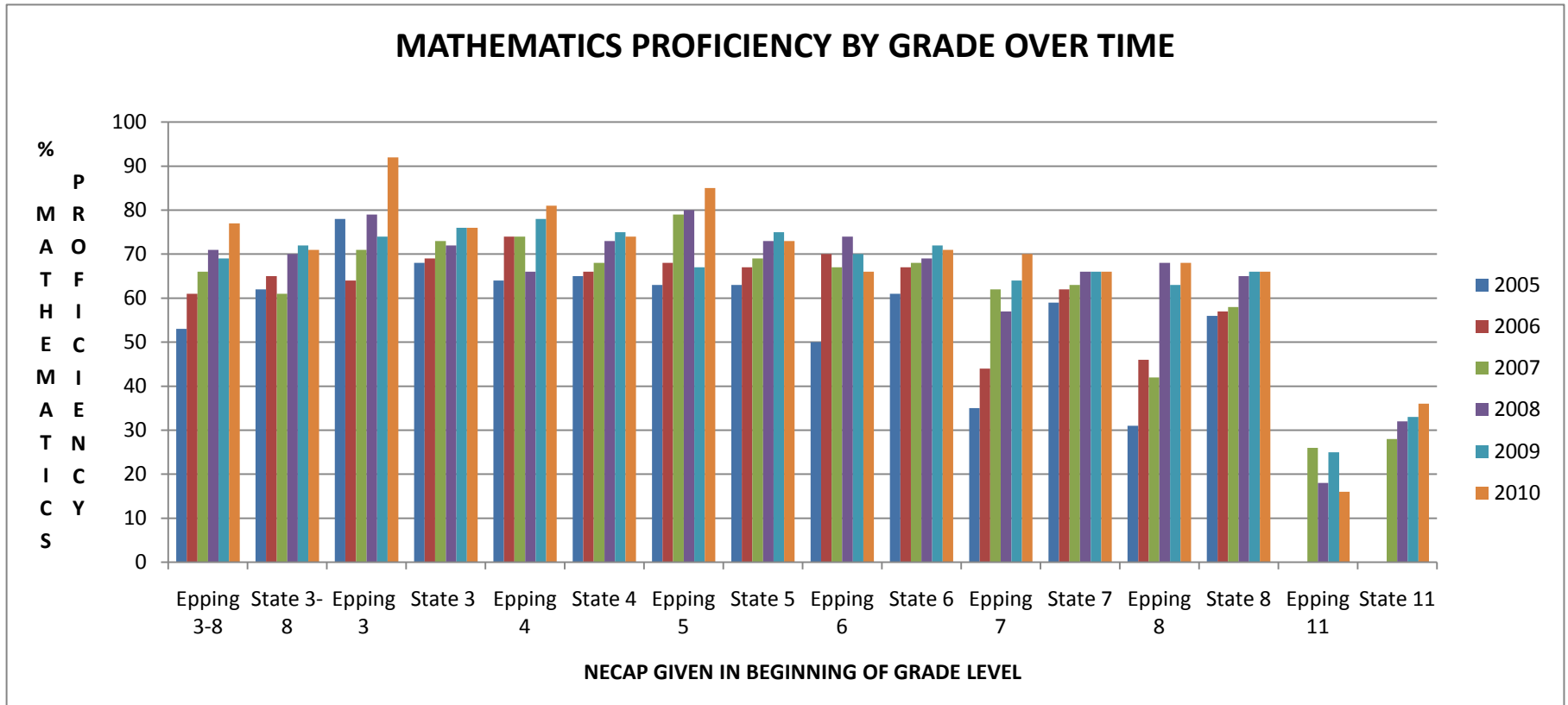
**READING PROFICIENCY BY GRADE - EPPING & STATE**

	<u>2005</u>	<u>2006</u>	<u>2007</u>	<u>2008</u>	<u>2009</u>	<u>2010</u>
Epping 3-8	60	67	74	75	78	77
State 3-8	66	71	72	75	77	77
Epping 3	82	75	77	76	76	86
State 3	71	75	77	78	80	80
Epping 4	76	77	74	64	81	81
State 4	69	72	74	75	75	77
Epping 5	56	70	83	78	71	80
State 5	67	72	71	76	79	78
Epping 6	50	67	80	72	74	64
State 6	65	72	73	74	76	77
Epping 7	49	59	77	81	83	68
State 7	66	67	75	77	77	72
Epping 8	48	58	55	80	82	83
State 8	62	66	67	71	76	78
Epping 11			60	52	74	61
State 11			67	72	73	74

EPPING SCHOOL DISTRICT  
 MATHEMATICS RESULTS PER NECAP\*

\* Year is the year the NECAP test is taken. The NECAP assesses student learning for the prior year.

**GRADES 3 TO 8 and 11**

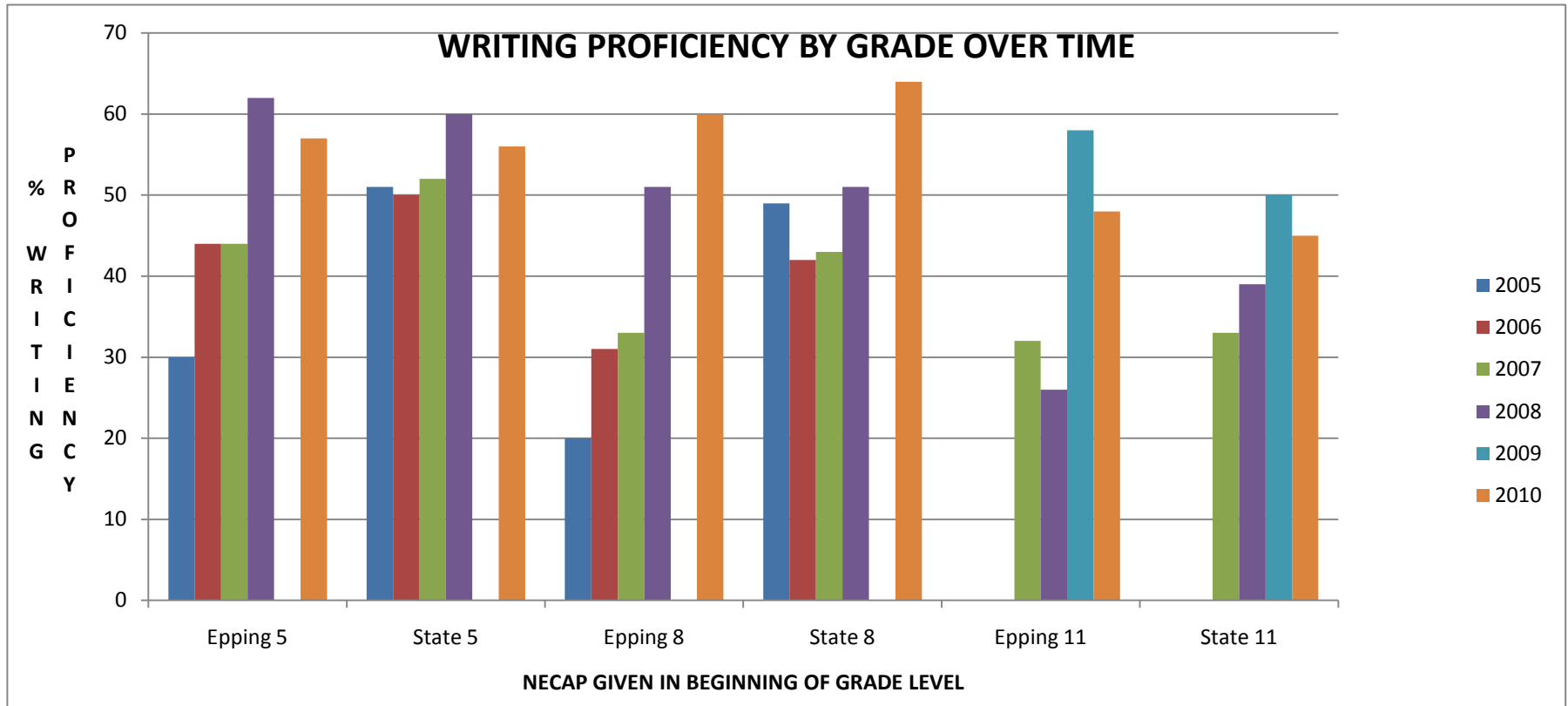


**MATHEMATICS PROFICIENCY BY GRADE - EPPING & STATE**

	<u>2005</u>	<u>2006</u>	<u>2007</u>	<u>2008</u>	<u>2009</u>	<u>2010</u>
Epping 3-8	53	61	66	71	69	77
State 3-8	62	65	61	70	72	71
Epping 3	78	64	71	79	74	92
State 3	68	69	73	72	76	76
Epping 4	64	74	74	66	78	81
State 4	65	66	68	73	75	74
Epping 5	63	68	79	80	67	85
State 5	63	67	69	73	75	73
Epping 6	50	70	67	74	70	66
State 6	61	67	68	69	72	71
Epping 7	35	44	62	57	64	70
State 7	59	62	63	66	66	66
Epping 8	31	46	42	68	63	68
State 8	56	57	58	65	66	66
Epping 11			26	18	25	16
State 11			28	32	33	36

EPPING SCHOOL DISTRICT  
WRITING RESULTS PER NECAP\*

\* Year is the year the NECAP test is taken. The NECAP assesses student learning for the prior year.



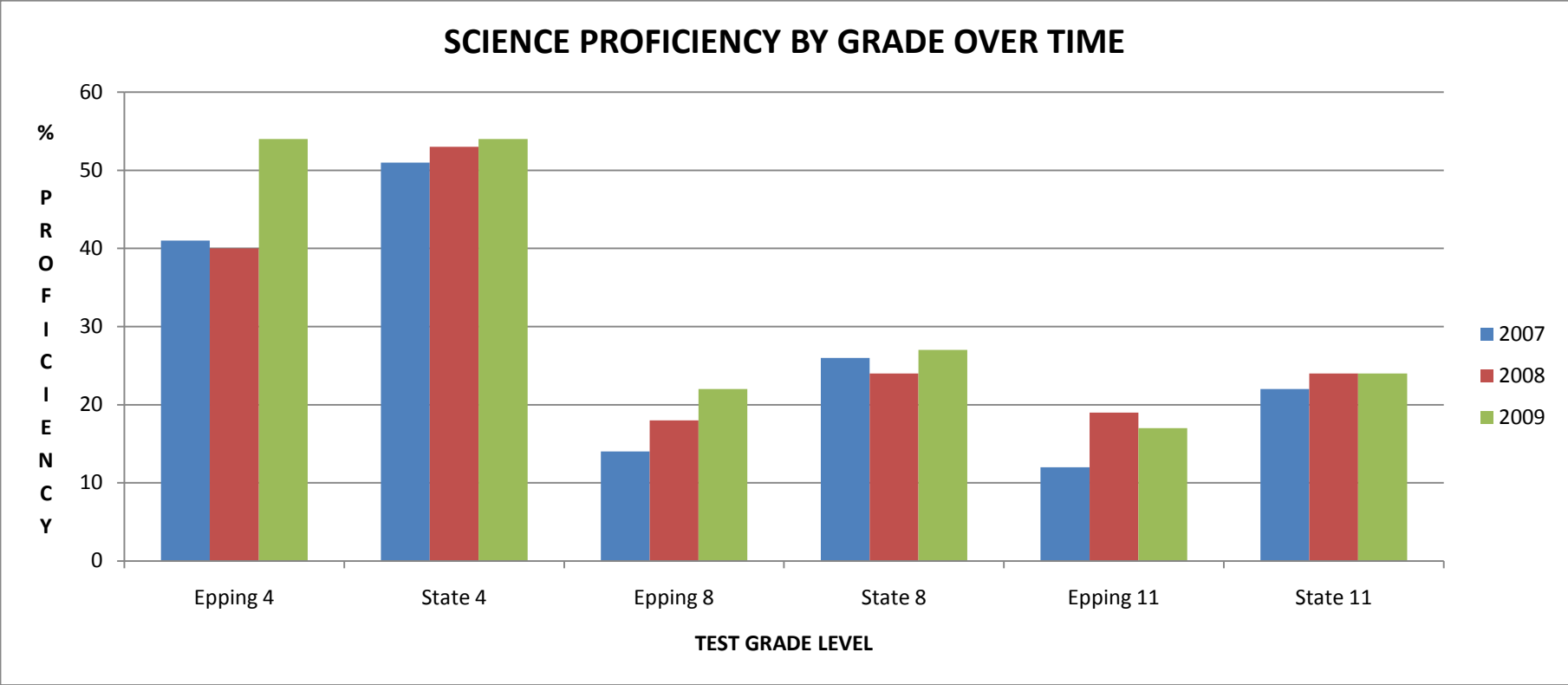
### WRITING PROFICIENCY BY GRADE

	<u>2005</u>	<u>2006</u>	<u>2007</u>	<u>2008</u>	<u>2009</u>	<u>2010</u>
Epping 5	30	44	44	62	*	57
State 5	51	50	52	60	*	56
Epping 8	20	31	33	51	*	60
State 8	49	42	43	51	*	64
Epping 11			32	26	58	48
State 11			33	39	50	45

\* No test was given.

EPPING SCHOOL DISTRICT  
SCIENCE RESULTS PER NECAP\*

\* Year is the year the NECAP test is taken. The NECAP assesses student learning for the prior year.



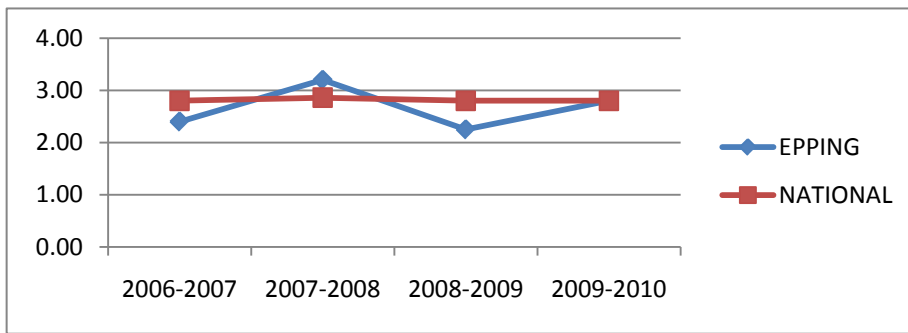
### SCIENCE PROFICIENCY BY GRADE

	<u>2007</u>	<u>2008</u>	<u>2009</u>
Epping 4	41	40	54
State 4	51	53	54
Epping 8	14	18	22
State 8	26	24	27
Epping 11	12	19	17
State 11	22	24	24

EPPING SCHOOL DISTRICT  
 ADVANCED PLACEMENT\*

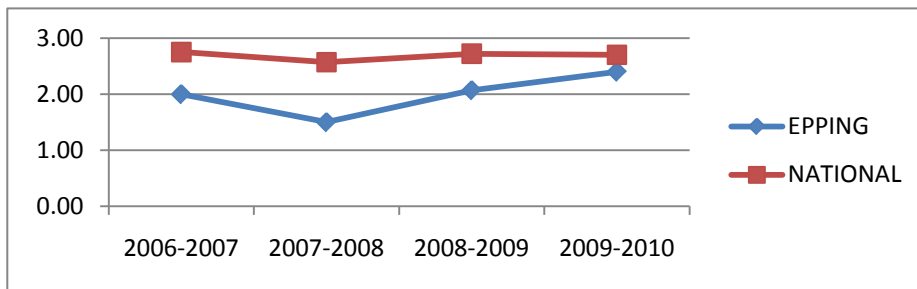
AP STATISTICS

<u>SCHOOL YEAR</u>	<u>STUDENTS</u>	<u>PASSING EXAMS</u>	<u>AVERAGE EPPING</u>	<u>AVERAGE NATIONAL</u>
2006-2007	5	3	2.40	2.80
2007-2008	5	5	3.20	2.86
2008-2009	4	1	2.25	2.80
2009-2010	6	4	2.80	2.80
2010-2011	4			



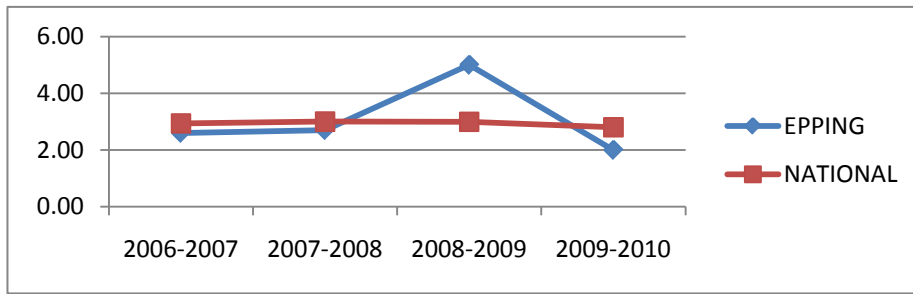
AP US HISTORY

<u>SCHOOL YEAR</u>	<u>STUDENTS</u>	<u>PASSING EXAMS</u>	<u>AVERAGE EPPING</u>	<u>AVERAGE NATIONAL</u>
2006-2007	16	4	2.00	2.75
2007-2008	13	0	1.50	2.57
2008-2009	14	3	2.07	2.72
2009-2010	11	4	2.40	2.70
2010-2011	11			



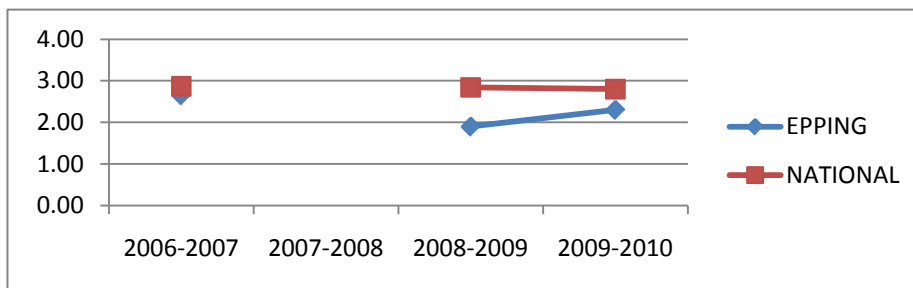
AP CALCULUS AB

<u>SCHOOL YEAR</u>	<u>STUDENTS</u>	<u>PASSING EXAMS</u>	<u>AVERAGE EPPING</u>	<u>AVERAGE NATIONAL</u>
2006-2007	5	4	2.60	2.94
2007-2008	7	3	2.70	3.00
2008-2009	1	1	5.00	2.99
2009-2010	4	2	2.00	2.80
2010-2011	6			



AP ENGLISH LIT & COMP

<u>SCHOOL YEAR</u>	<u>STUDENTS</u>	<u>PASSING EXAMS</u>	<u>AVERAGE EPPING</u>	<u>AVERAGE NATIONAL</u>
2006-2007	23	12	2.65	2.87
2007-2008	0			
2008-2009	20	4	1.90	2.84
2009-2010	11	3	2.30	2.80
2010-2011	9			



AP ENGLISH LANG & COMP

<u>SCHOOL YEAR</u>	<u>STUDENTS</u>	<u>PASSING EXAMS</u>	<u>AVERAGE EPPING</u>	<u>AVERAGE NATIONAL</u>
2007-2008	12	5	2.40	2.82
2008-2009	0			
2009-2010	9	4	2.60	2.90
2010-2011	0			

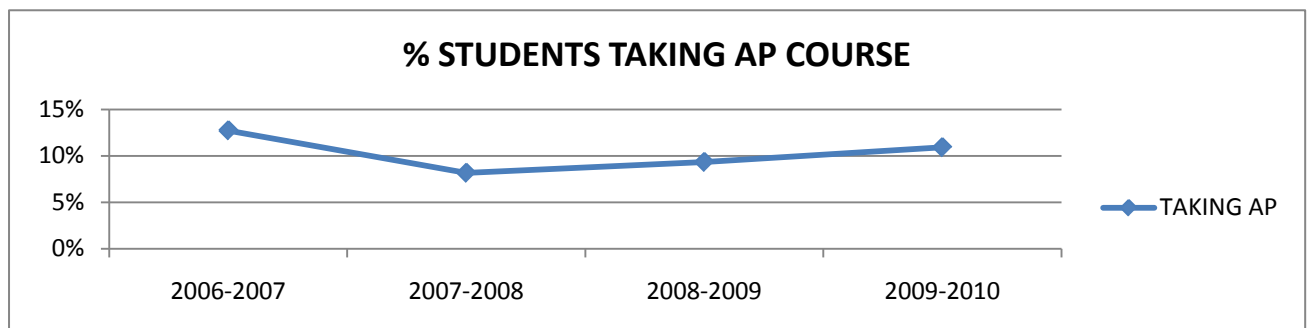
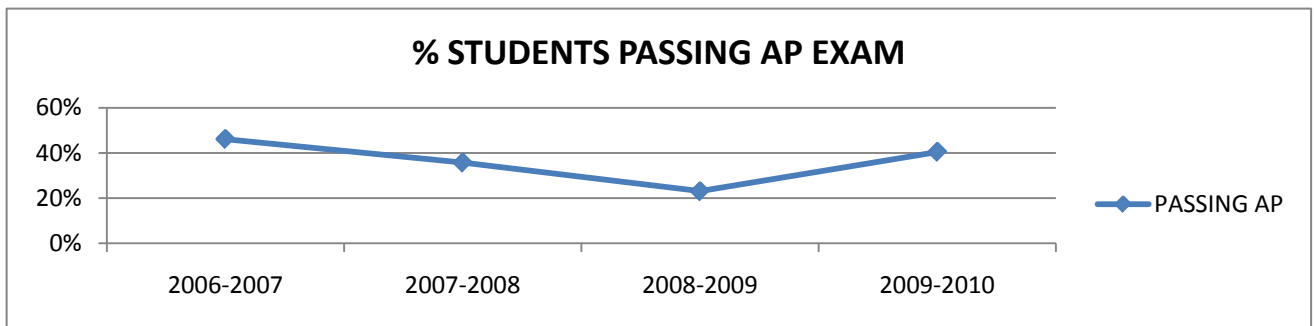


AP CHEMISTRY

<u>SCHOOL YEAR</u>	<u>STUDENTS</u>	<u>PASSING EXAMS</u>	<u>AVERAGE EPPING</u>	<u>AVERAGE NATIONAL</u>
2010-2011	3			

**ALL ADVANCED PLACEMENT COURSES**

<u>SCHOOL YEAR</u>	<u>TOTAL AP EXAMS</u>	<u>PASSING EXAMS</u>	<u>% STUDENTS PASSING AP</u>	<u>STUDENTS TAKING AP</u>	<u>STUDENTS ENROLLED</u>	<u>% STUDENTS TAKING AP</u>
2006-2007	65	30	46%	47	369	13%
2007-2008	42	15	36%	29	355	8%
2008-2009	39	9	23%	28	300	9%
2009-2010	42	17	40%	32	293	11%
2010-2011	33			24		

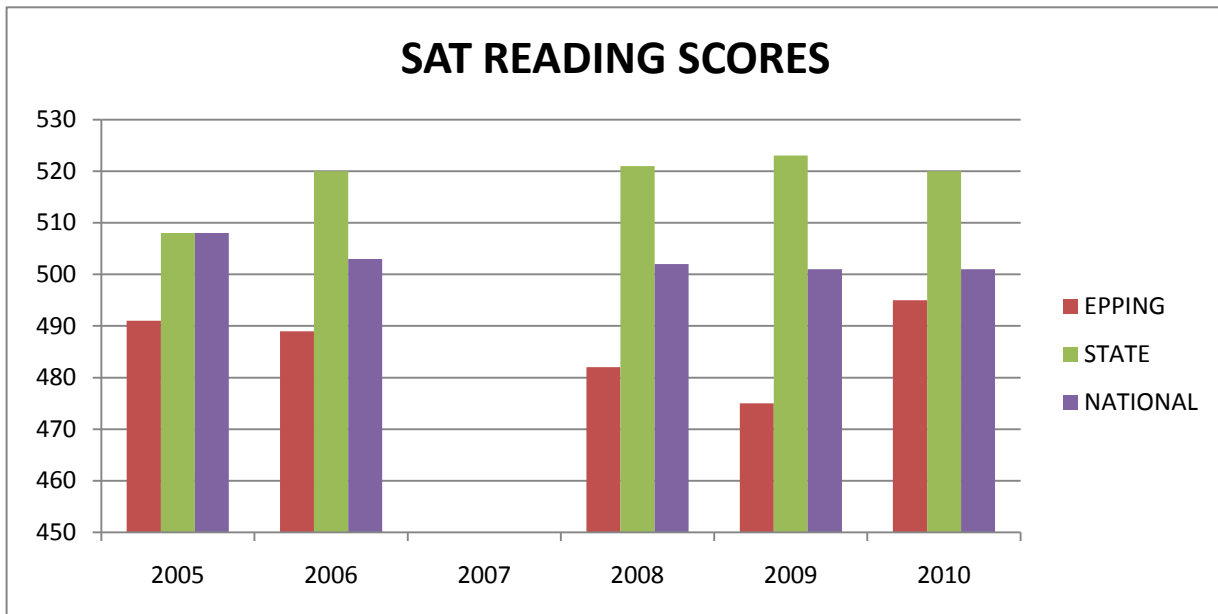


\* College Board Advanced Placement Examination scores range from 1 to 5. Acceptance of AP exam for college credit is determined by each college. Many colleges accept grades of 3 or better for college credit.

EPPING SCHOOL DISTRICT  
SAT (SENIORS ONLY)

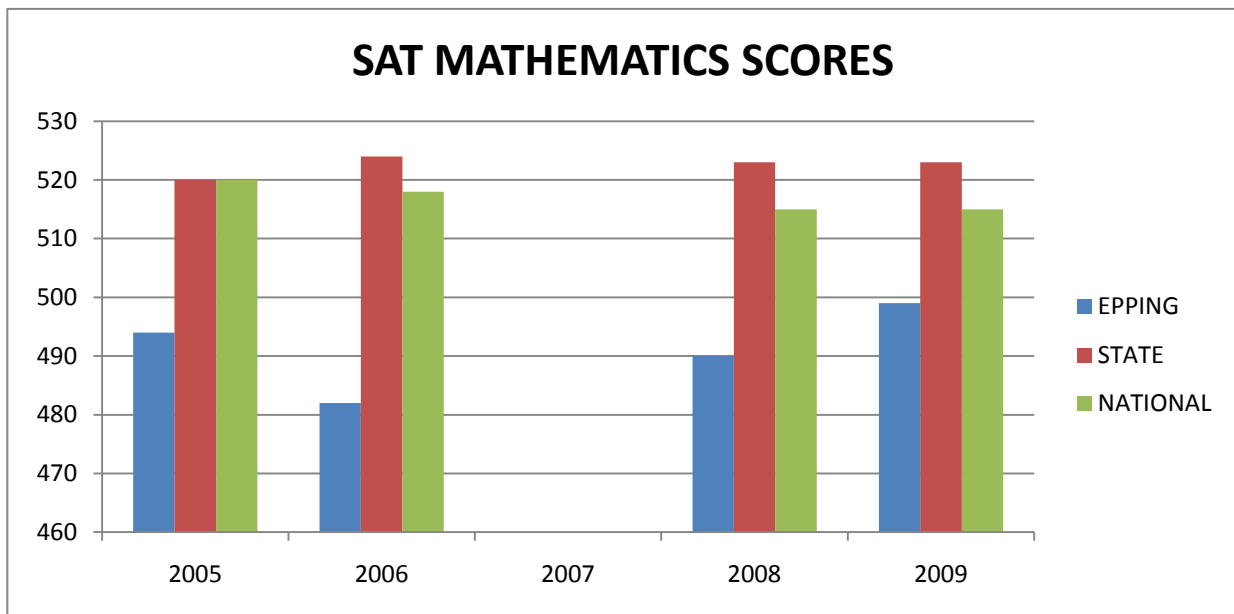
SAT READING SCORES

<u>SCHOOL YEAR</u>	<u>EPPING</u>	<u>STATE</u>	<u>NATIONAL</u>
2005	491	508	508
2006	489	520	503
2007			
2008	482	521	502
2009	475	523	501
2010	495	520	501



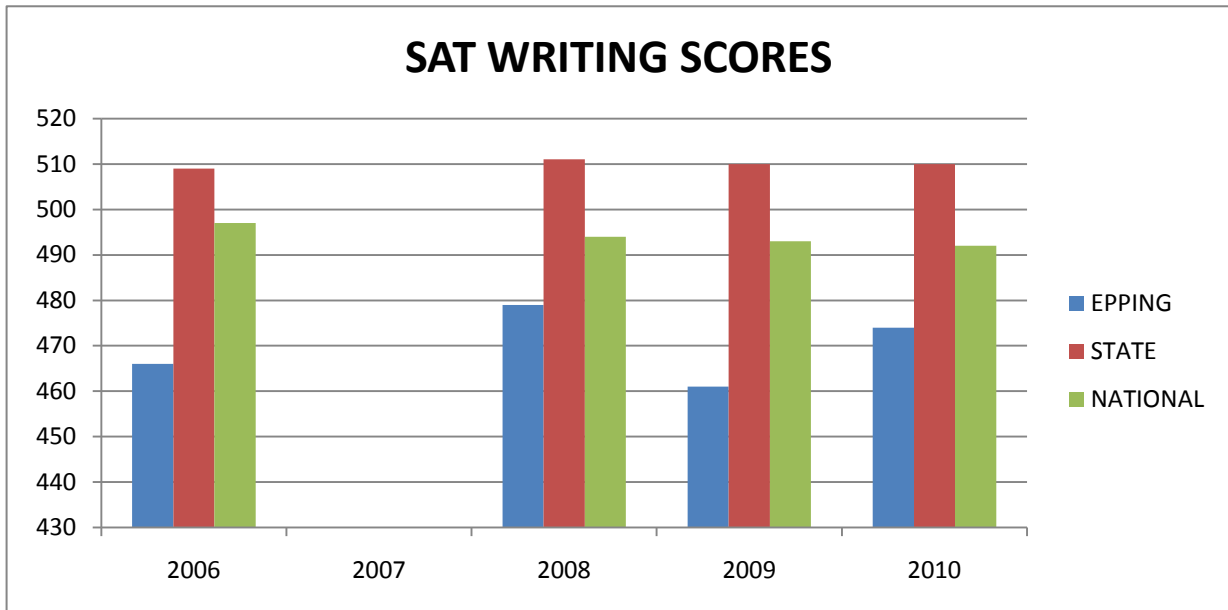
## SAT MATHEMATICS

<u>SCHOOL YEAR</u>	<u>EPPING</u>	<u>STATE</u>	<u>NATIONAL</u>
2005	494	520	520
2006	482	524	518
2007			
2008	490	523	515
2009	499	523	515
2010	483	524	516

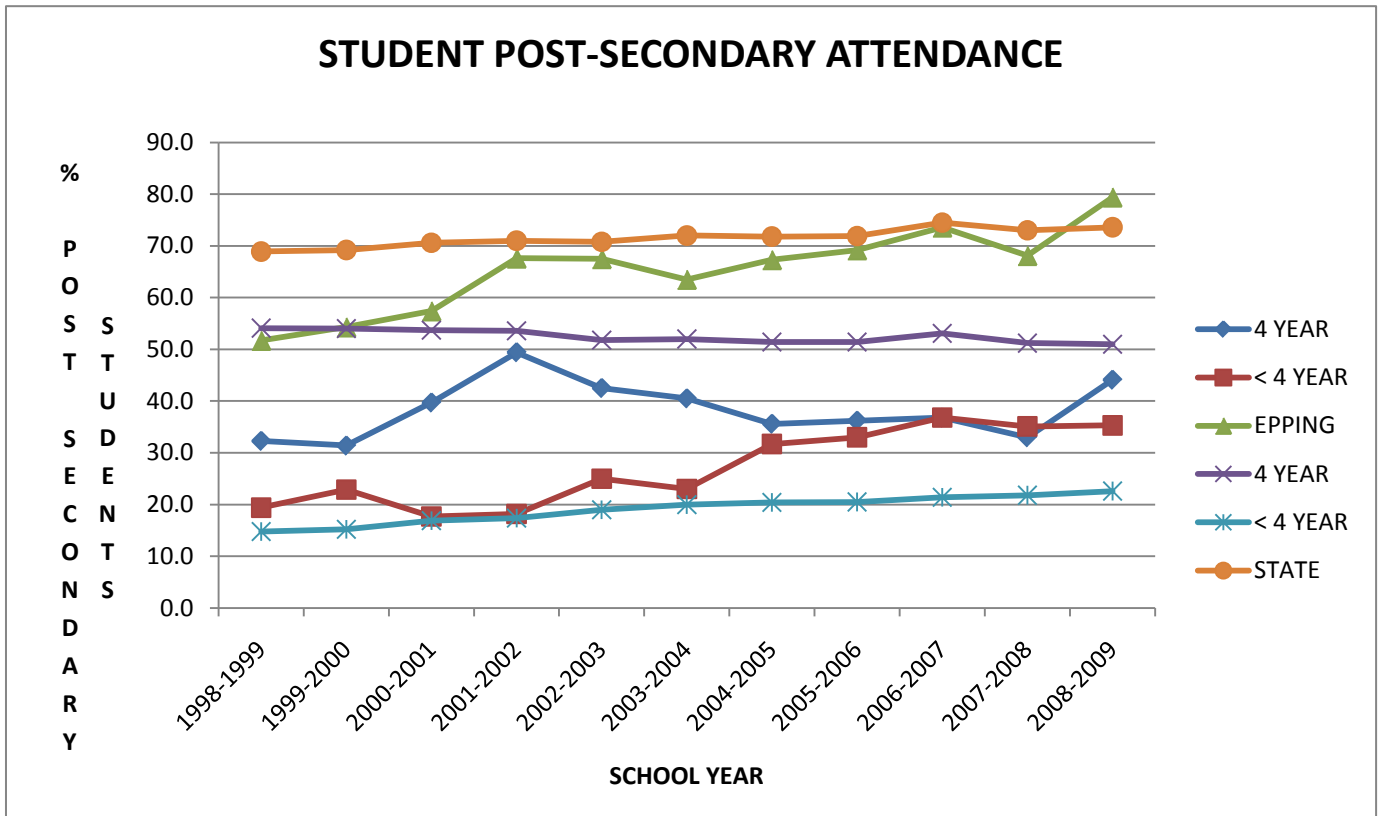


## SAT WRITING

<u>SCHOOL YEAR</u>	<u>EPPING</u>	<u>STATE</u>	<u>NATIONAL</u>
2006	466	509	497
2007			
2008	479	511	494
2009	461	510	493
2010	474	510	492



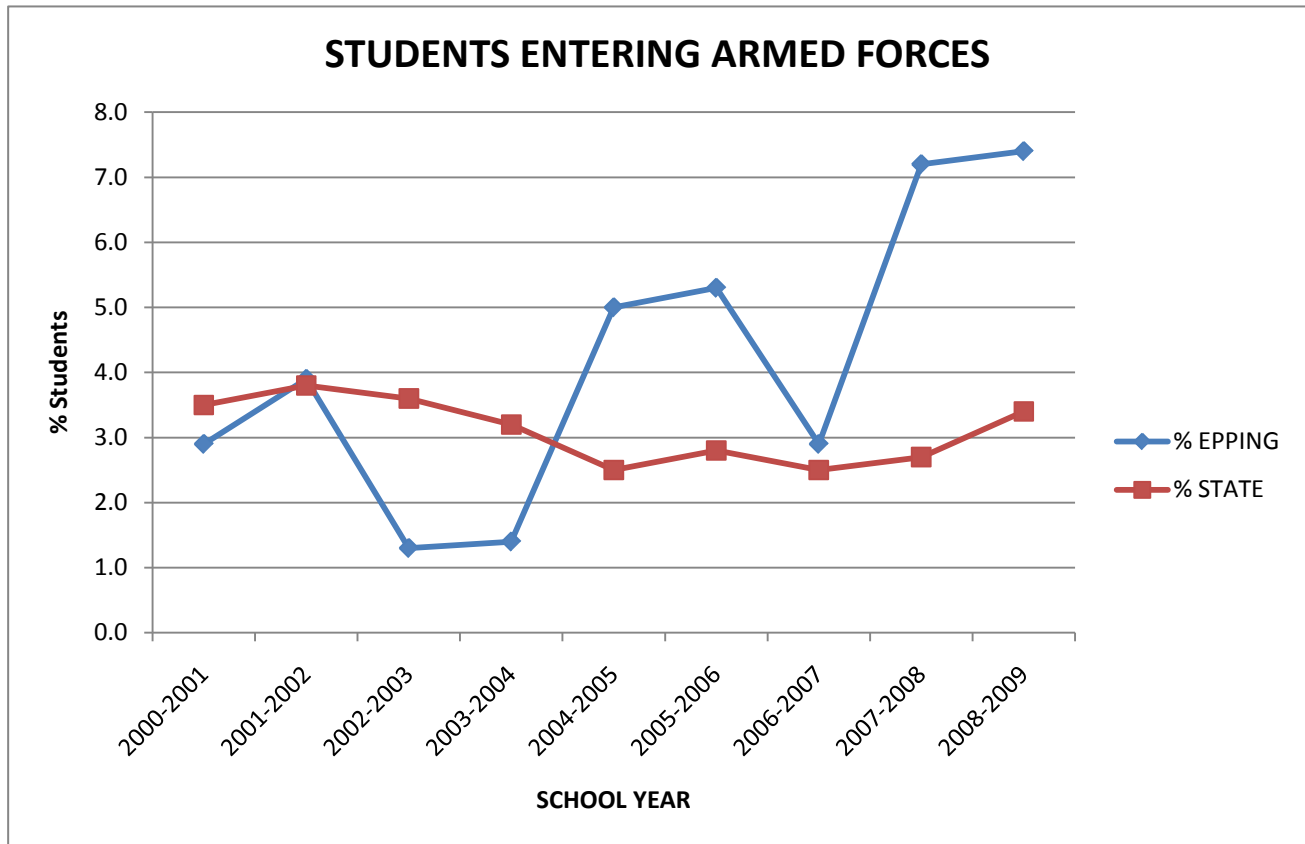
EPPING SCHOOL DISTRICT  
 STUDENT POST-SECONDARY ATTENDANCE\*



SCHOOL YEAR	% EPPING 4 YEAR	% EPPING < 4 YEAR	TOTAL EPPING	%STATE 4 YEAR	% STATE < 4 YEAR	TOTAL STATE
1998-1999	32.3	19.4	51.7	54.1	14.8	68.9
1999-2000	31.4	22.9	54.3	54.0	15.2	69.2
2000-2001	39.7	17.7	57.4	53.7	16.9	70.6
2001-2002	49.4	18.2	67.6	53.6	17.4	71.0
2002-2003	42.5	25.0	67.5	51.8	19.0	70.8
2003-2004	40.5	23.0	63.5	52.0	20.0	72.0
2004-2005	35.6	31.7	67.3	51.4	20.4	71.8
2005-2006	36.2	33.0	69.2	51.4	20.5	71.9
2006-2007	36.8	36.8	73.6	53.1	21.4	74.5
2007-2008	33.0	35.1	68.1	51.2	21.8	73.0
2008-2009	44.1	35.3	79.4	51.0	22.6	73.6

\* High School Completers (NH Department of Education)

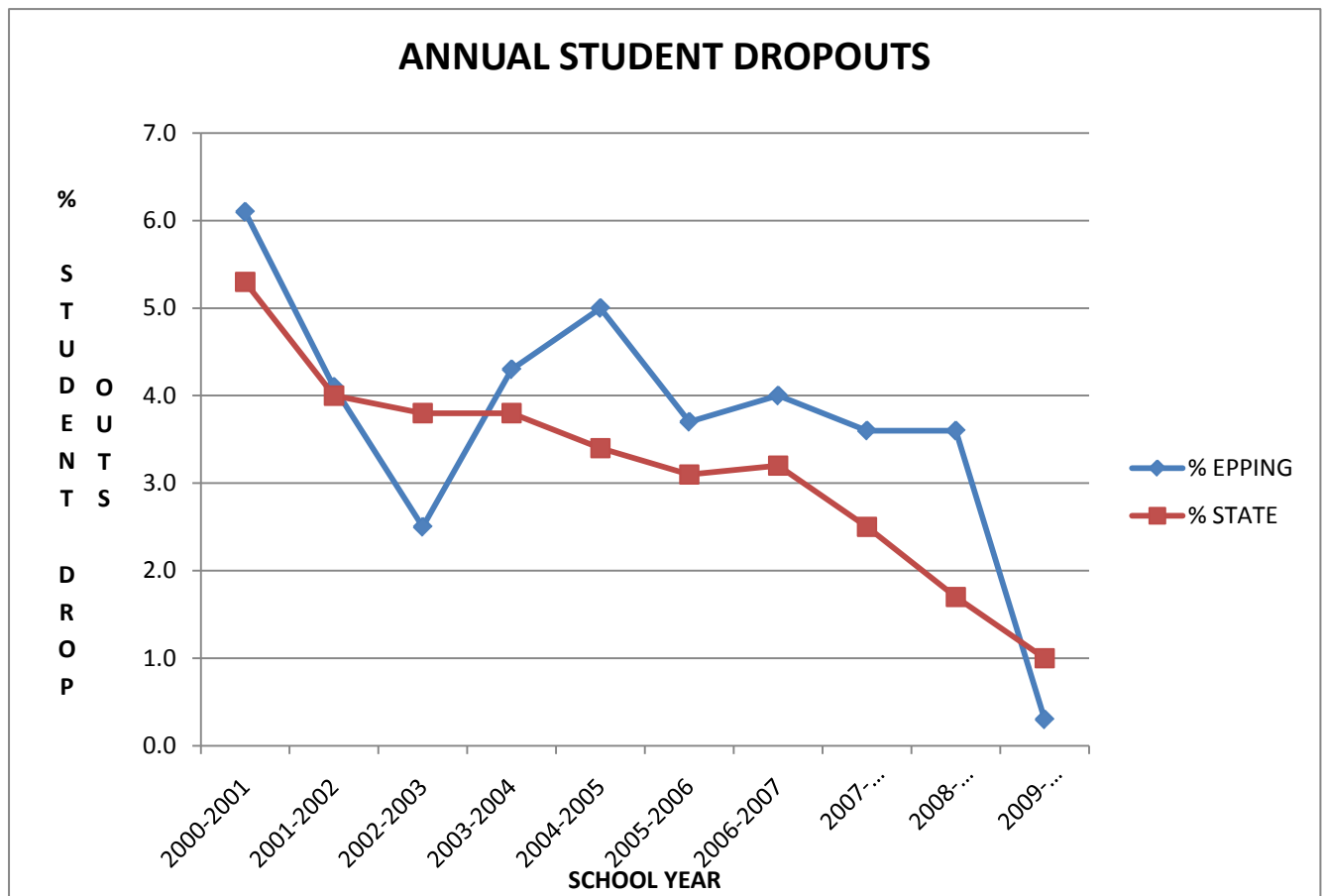
EPPING SCHOOL DISTRICT  
 STUDENTS ENTERING ARMED FORCES AFTER GRADUATION\*



<u>SCHOOL YEAR</u>	<u>% EPPING</u>	<u>% STATE</u>
2000-2001	2.9	3.5
2001-2002	3.9	3.8
2002-2003	1.3	3.6
2003-2004	1.4	3.2
2004-2005	5.0	2.5
2005-2006	5.3	2.8
2006-2007	2.9	2.5
2007-2008	7.2	2.7
2008-2009	7.4	3.4

\* High School Completers (NH Department of Education)

EPPING SCHOOL DISTRICT  
HIGH SCHOOL STUDENT DROPOUT FIGURES\*



<u>SCHOOL YEAR</u>	<u>STUDENT DROPOUTS</u>	<u>% EPPING</u>	<u>% STATE</u>
2000-2001	23	6.1	5.3
2001-2002	17	4.1	4.0
2002-2003	11	2.5	3.8
2003-2004	18	4.3	3.8
2004-2005	22	5.0	3.4
2005-2006	15	3.7	3.1
2006-2007	15	4.0	3.2
2007-2008*	13	3.6	2.5
2008-2009*	11	3.6	1.7
2009-2010*	1	0.3	1.0

\* Dropout data (NH Department of Education)

Students exiting early to receive a GED or to attend college are not included in the dropout data per change in NHDOE policy.

## FINANCIAL INFORMATION

Assessed Tax Rate

Equalized Tax Rate

Fund Balance Returned

Cost Per Pupil

District

Elementary School

Middle School

High School

Minimum Teacher Salary

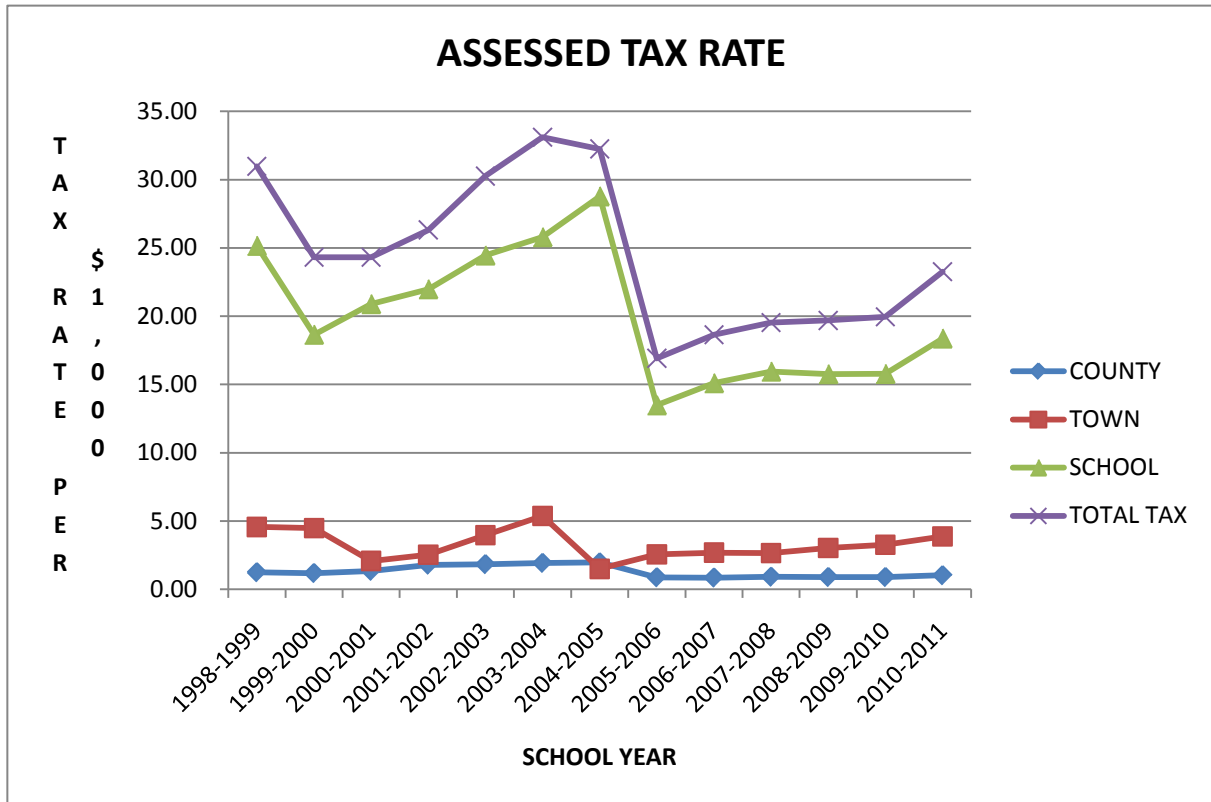
Average Class Sizes

School Budget

School Revenue

EPPING SCHOOL DISTRICT  
 ASSESSED TAX RATE\*

\* Per \$1,000 assessed valuation



<u>SCHOOL YEAR</u>	<u>TAX YEAR</u>	<u>COUNTY</u>	<u>TOWN</u>	<u>SCHOOL</u>	<u>TOTAL TAX</u>
1998-1999	1998	1.25	4.57	25.16	30.98
1999-2000	1999	1.19	4.48	18.65	24.32
2000-2001	2000	1.35	2.08	20.89	24.32
2001-2002	2001	1.80	2.54	21.98	26.32
2002-2003	2002	1.84	3.97	24.45	30.26
2003-2004	2003	1.93	5.38	25.79	33.10
2004-2005	2004	1.97	1.50	28.78	32.25
2005-2006	2005	0.88	2.56	13.48	16.92
2006-2007	2006	0.86	2.69	15.10	18.65
2007-2008	2007	0.92	2.66	15.95	19.53
2008-2009	2008	0.90	3.03	15.76	19.69
2009-2010	2009	0.90	3.27	15.78	19.95
2010-2011	2010	1.03	3.87	18.37	23.27

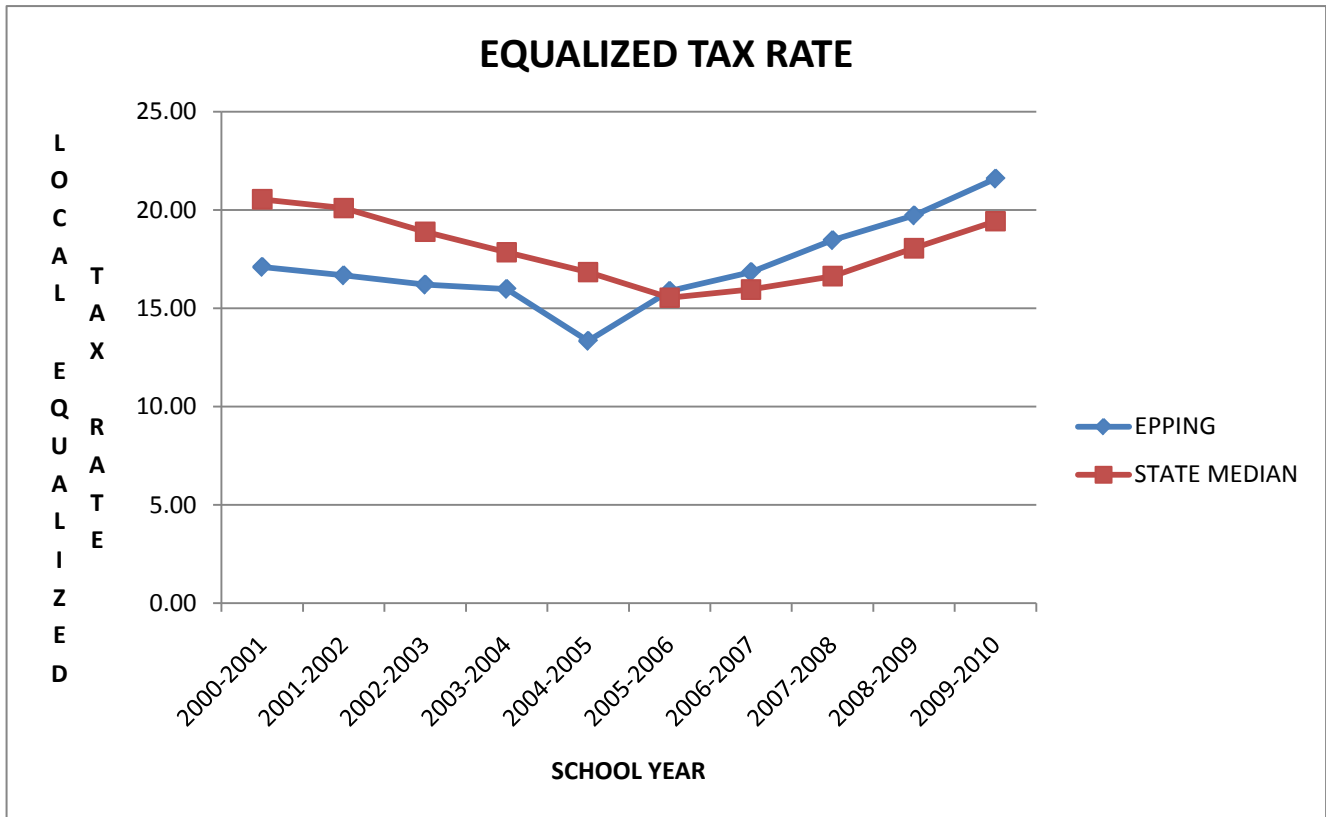
\* Tax Rate Calculation (Department of Revenue Administration)

School tax includes local school rate and state school rate

2010-2011 includes a property reevaluation

EPPING SCHOOL DISTRICT  
EQUALIZED TAX RATE\*

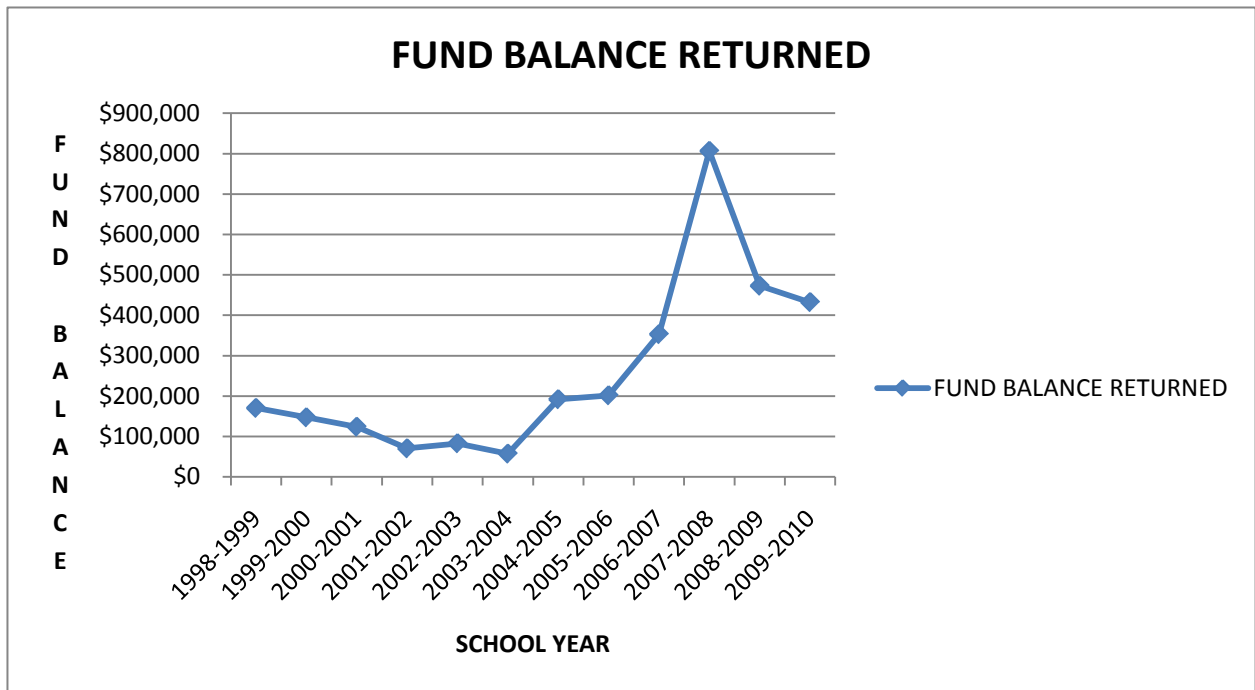
\* Per \$1,000 equalized valuation to compare with state median



<u>SCHOOL YEAR</u>	<u>EPPING</u>	<u>STATE MEDIAN</u>	<u>DIFFERENCE</u>
2000-2001	17.11	20.55	-3.44
2001-2002	16.68	20.10	-3.42
2002-2003	16.21	18.90	-2.69
2003-2004	15.99	17.86	-1.87
2004-2005	13.35	16.84	-3.49
2005-2006	15.89	15.54	0.35
2006-2007	16.85	15.96	0.89
2007-2008	18.47	16.64	1.83
2008-2009	19.73	18.06	1.67
2009-2010	21.60	19.44	2.16

\* Valuations, Property Tax Assessments and School Tax Rates (NH Department of Education)  
Equalized tax includes town, local school, state school, and other rates

EPPING SCHOOL DISTRICT  
 FUND BALANCE RETURNED\*

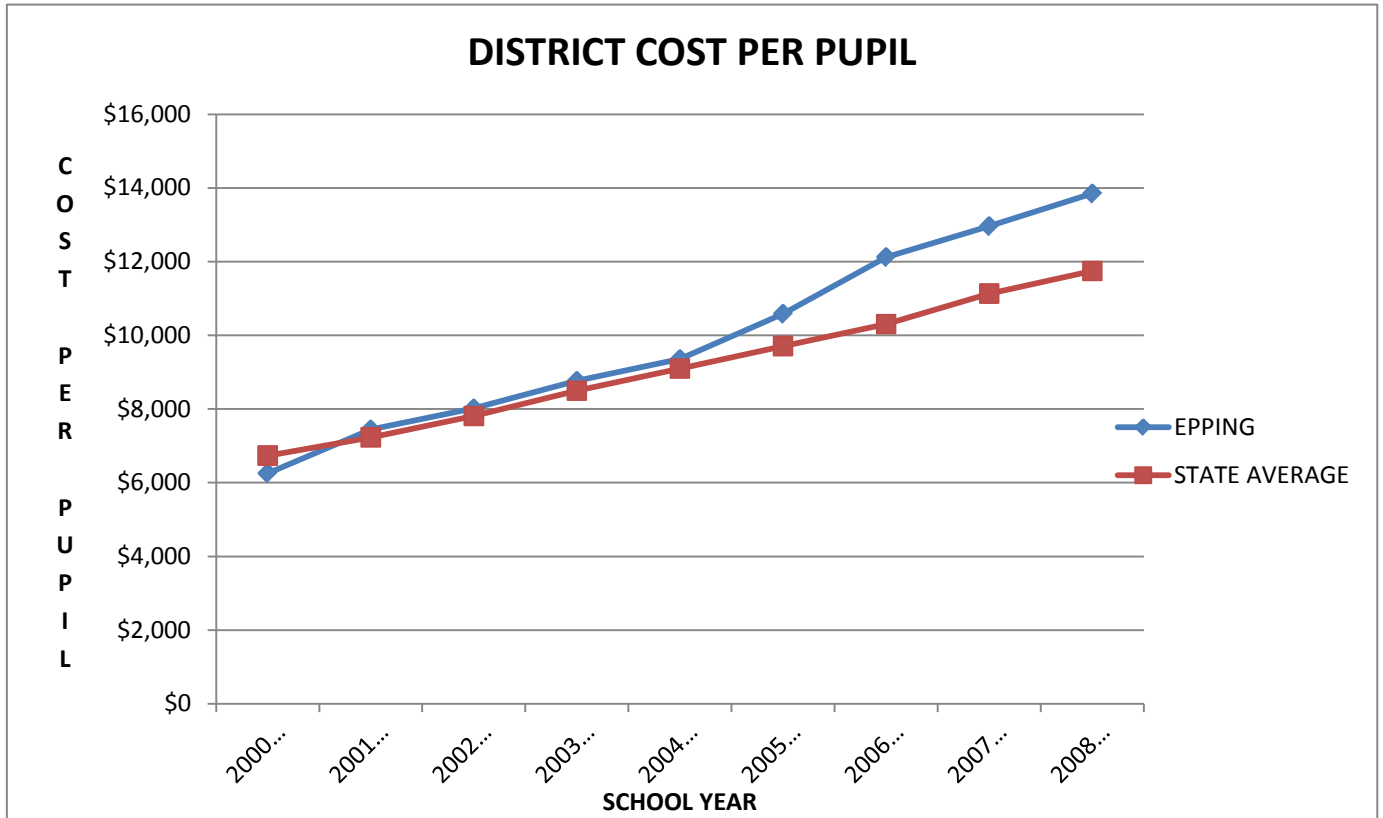


<u>SCHOOL YEAR</u>	<u>FUND BALANCE RETURNED</u>
1997-1998	\$257,174
1998-1999	\$170,476
1999-2000	\$147,303
2000-2001	\$123,931
2001-2002	\$70,557
2002-2003	\$83,054
2003-2004	\$57,381
2004-2005	\$192,070
2005-2006	\$201,760
2006-2007	\$353,159
2007-2008	\$806,554
2008-2009	\$472,883
2009-2010	\$432,401

Notes:

\* Surplus revenue funds and unexpended funds reported by Epping Financial Office  
 Fund balance includes building project interest for years 2005-2006 to 2007-2008

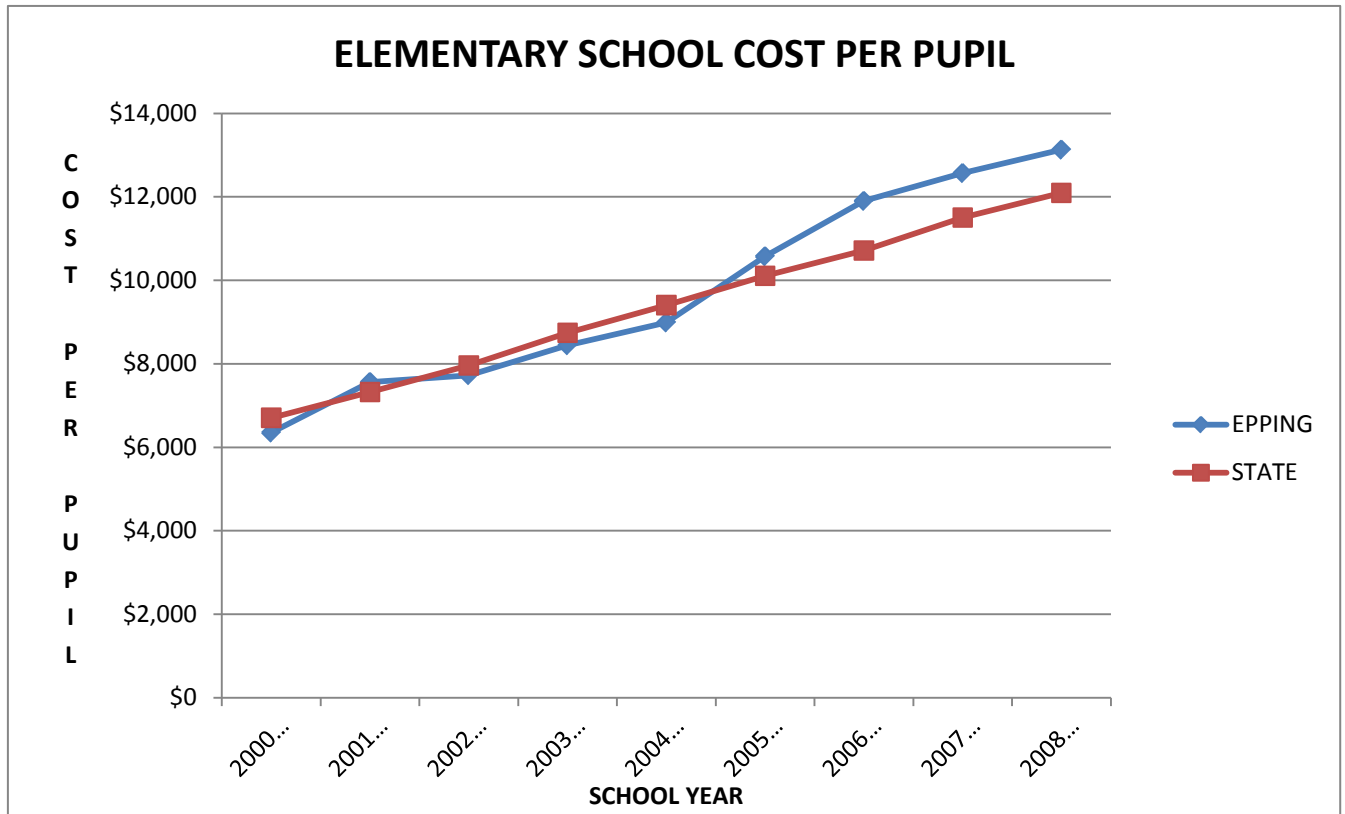
EPPING SCHOOL DISTRICT  
 COST PER PUPIL\*



<u>SCHOOL YEAR</u>	<u>EPPING</u>	<u>STATE AVERAGE</u>
2000-2001	\$6,259	\$6,738
2001-2002	\$7,446	\$7,233
2002-2003	\$8,017	\$7,809
2003-2004	\$8,766	\$8,496
2004-2005	\$9,356	\$9,099
2005-2006	\$10,587	\$9,710
2006-2007	\$12,126	\$10,305
2007-2008	\$12,966	\$11,135
2008-2009	\$13,851	\$11,746

\* Cost Per Pupil By District (NH Department of Education)

COST PER PUPIL\*

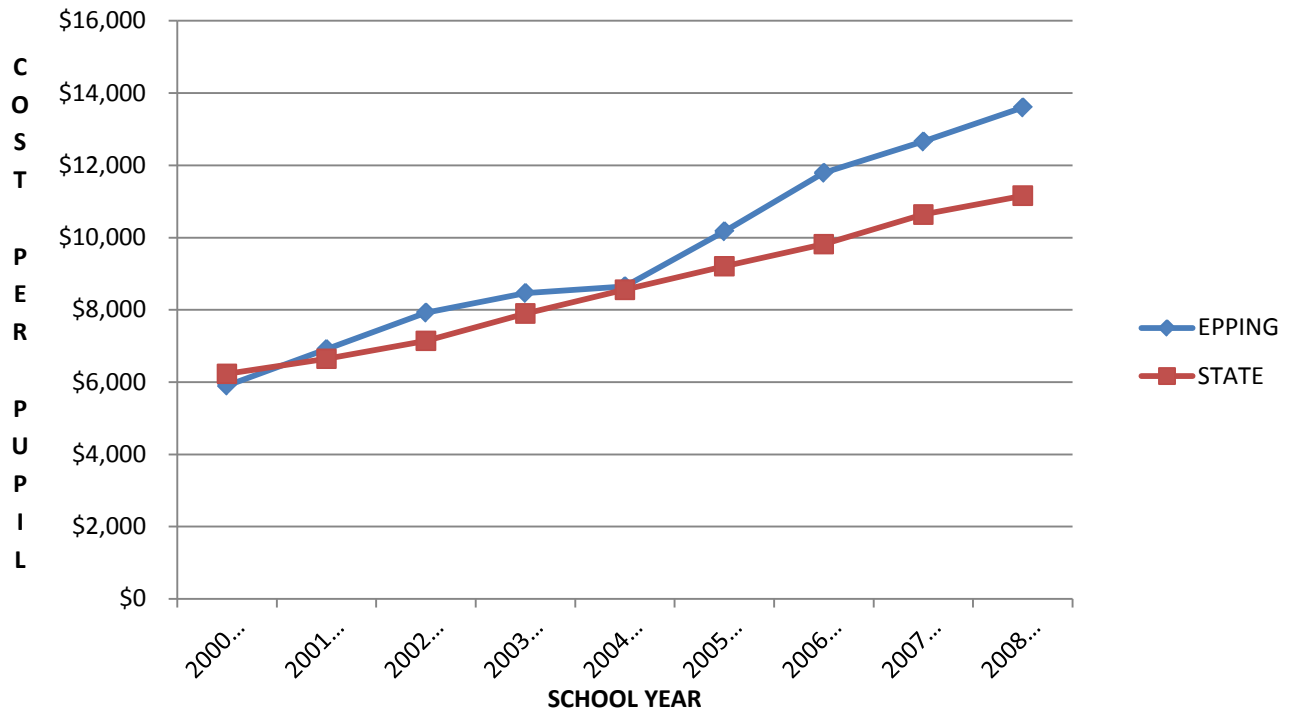


<u>SCHOOL YEAR</u>	<u>EPPING</u>	<u>STATE</u>
2000-2001	\$6,350	\$6,705
2001-2002	\$7,561	\$7,321
2002-2003	\$7,726	\$7,961
2003-2004	\$8,443	\$8,741
2004-2005	\$8,989	\$9,406
2005-2006	\$10,574	\$10,108
2006-2007	\$11,901	\$10,716
2007-2008	\$12,569	\$11,507
2008-2009	\$13,130	\$12,096

\* Cost Per Pupil By District (NH Department of Education)

EPPING MIDDLE SCHOOL  
COST PER PUPIL\*

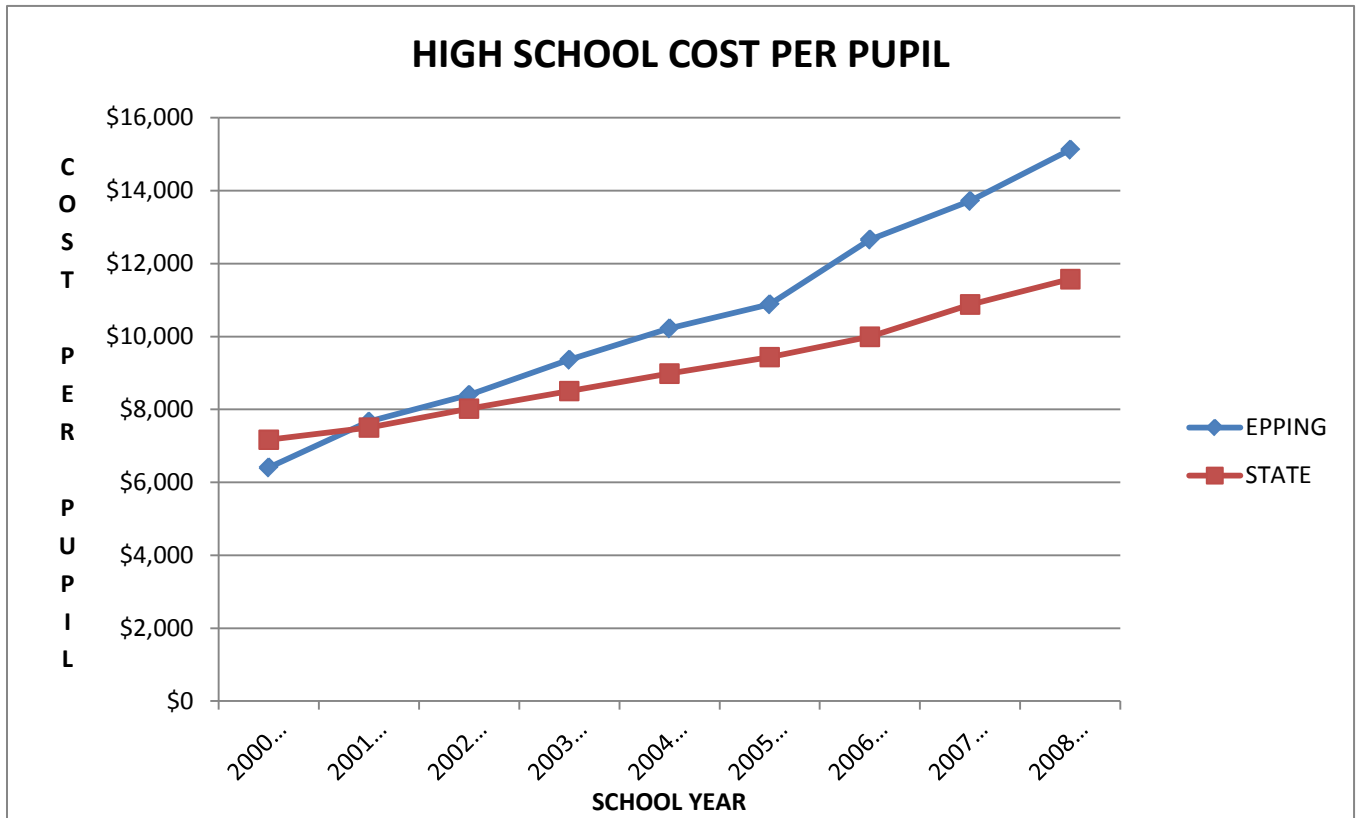
## MIDDLE SCHOOL COST PER PUPIL



<u>SCHOOL YEAR</u>	<u>EPPING</u>	<u>STATE</u>
2000-2001	\$5,902	\$6,232
2001-2002	\$6,912	\$6,646
2002-2003	\$7,923	\$7,144
2003-2004	\$8,466	\$7,901
2004-2005	\$8,651	\$8,558
2005-2006	\$10,175	\$9,208
2006-2007	\$11,795	\$9,821
2007-2008	\$12,661	\$10,640
2008-2009	\$13,605	\$11,161

\* Cost Per Pupil By District (NH Department of Education)

EPPING HIGH SCHOOL  
COST PER PUPIL\*



<u>SCHOOL YEAR</u>	<u>EPPING</u>	<u>STATE</u>
2000-2001	\$6,408	\$7,167
2001-2002	\$7,665	\$7,502
2002-2003	\$8,398	\$8,023
2003-2004	\$9,363	\$8,503
2004-2005	\$10,223	\$8,982
2005-2006	\$10,883	\$9,431
2006-2007	\$12,660	\$9,992
2007-2008	\$13,718	\$10,877
2008-2009	\$15,125	\$11,573

\* Cost Per Pupil By District (NH Department of Education)

Per pupil cost includes all funds - general, food, and federal.

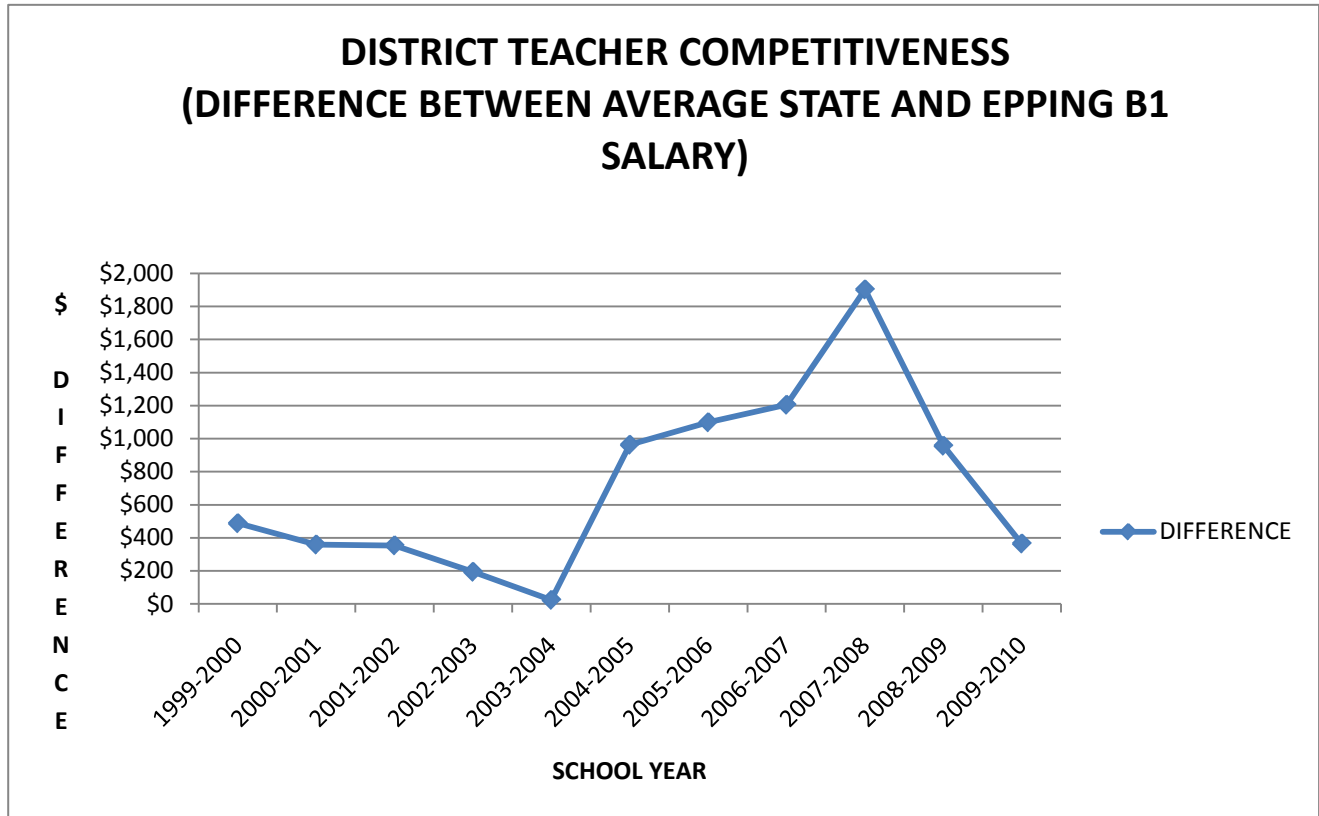
Per pupil cost does not include transportation, tuition, capital facilities & debt.

Warrant articles for small renovation projects are included in the per pupil cost.

Per pupil cost does not factor in tuition revenue.

EPPING SCHOOL DISTRICT  
 MINIMUM TEACHER SALARY\*

\* Starting teacher salary at Bachelor Step 1.



<u>SCHOOL YEAR</u>	<u>STATE</u>	<u>EPPING</u>	<u>DIFFERENCE</u>	<u>EPPING RANK IN THE STATE**</u>
1999-2000	\$23,953	\$23,465	\$488	92
2000-2001	\$24,645	\$24,286	\$359	80
2001-2002	\$25,611	\$25,257	\$354	-
2002-2003	\$26,459	\$26,265	\$194	74
2003-2004	\$27,340	\$27,316	\$24	73
2004-2005	\$28,279	\$27,316	\$963	100
2005-2006	\$29,234	\$28,135	\$1,099	106
2006-2007	\$30,185	\$28,980	\$1,205	104
2007-2008	\$31,164	\$29,261	\$1,903	119
2008-2009	\$32,301	\$31,344	\$957	100
2009-2010	\$33,120	\$32,755	\$365	86

\*\* The ranking is based on 157 to 160 school districts.  
 State data is the average.

AVERAGE CLASS SIZES\*

2008-2009

<u>GRADE</u>	<u>TEACHERS</u>	<u>OCTOBER 2008-2009 ENROLLMENT</u>	<u>ACTUAL 2008-2009 CLASS SIZE</u>
1	4	66	17
2	4	84	21
3	4	61	15
4	4	76	19
5	4	75	19
6	4	72	18
7	4	71	18
8	4	69	17

2009-2010

<u>GRADE</u>	<u>TEACHERS</u>	<u>OCTOBER 2009-2010 ENROLLMENT</u>	<u>ACTUAL 2009-2010 CLASS SIZE</u>
1	5	85	17
2	4	66	17
3	4	87	22
4	3	65	22
5	4	76	19
6	4	75	19
7	4	72	18
8	4	64	16

2010-2011

<u>GRADE</u>	<u>TEACHERS</u>	<u>OCTOBER 2010-2011 ENROLLMENT</u>	<u>ACTUAL 2010-2011 CLASS SIZE</u>
K - FT	2	82	20
K - PT	1		20
1	5	79	16
2	5	85	17
3	3	68	23
4	4	84	21
5	3	63	21
6	4	78	20
7	4	73	18
8	4	71	18

2011-2012		PROJECTED 2011-2012	PROJECTED 2011-2012
<u>GRADE</u>	<u>TEACHERS</u>	<u>ENROLLMENT</u>	<u>CLASS SIZE</u>
K - FT	3	82	19
K - PT	1		13
1	5	82	16
2	4	79	20
3	4	85	21
4	4	68	17
5	4	84	21
6	4	63	16
7	4	78	20
8	4	73	18

\* Calculated by Epping Superintendent's Office

#### NH PUBLIC SCHOOL STANDARDS

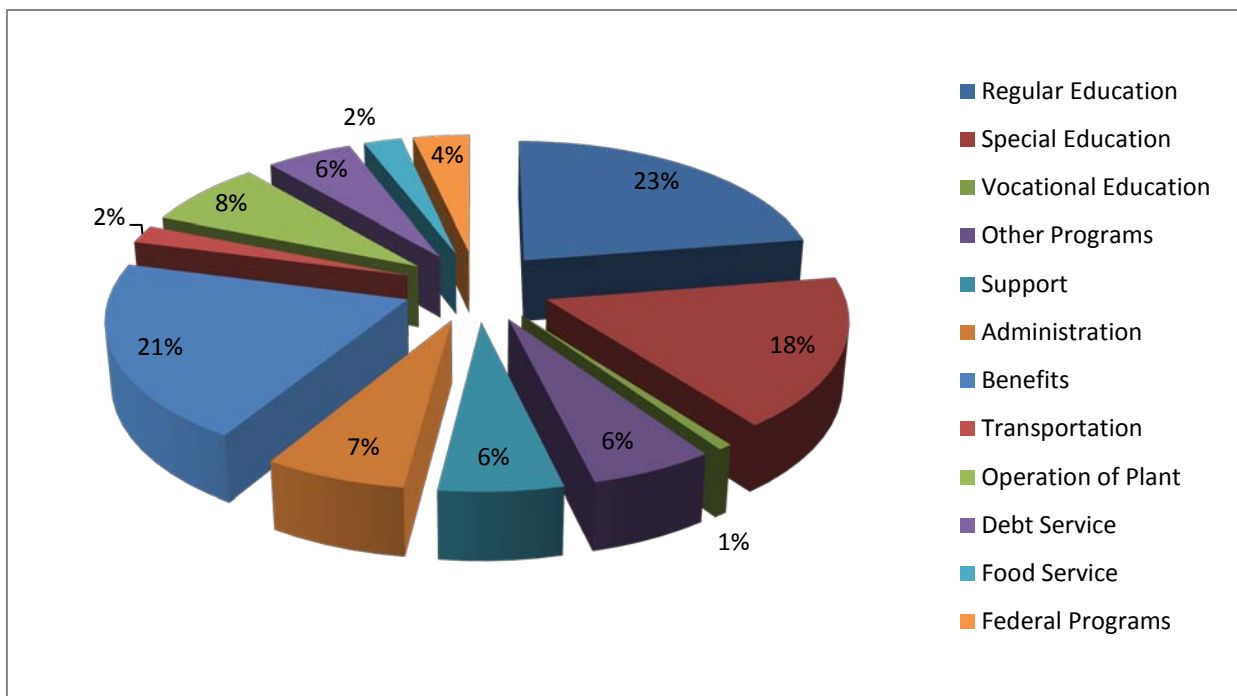
<u>Grades</u>	<u>Standard</u>	<u>Strive for</u>
K	25 or less	20 or less
1 to 2	25 or less	20 or less
3 to 5	30 or less	25 or less
6 to 8	30 or less	
9 to 12	30 or less*	

\* Exception for lab classes

## SCHOOL BUDGET FOR 2010-2011\*

\* Includes Only Epping Students

	<u>Budget</u>	<u>%</u>
Regular Education	\$3,831,647	23%
Special Education	\$2,922,490	18%
Vocational Education	\$116,640	1%
Other Programs	\$290,782	6%
Support	\$995,218	6%
Administration	\$1,139,572	7%
Benefits	\$3,460,912	21%
Transportation	\$349,541	2%
Operation of Plant	\$1,290,598	8%
Debt Service	\$919,291	6%
Food Service	\$403,483	2%
Federal Programs	<u>\$603,837</u>	<u>4%</u>
<b>Total</b>	<b>\$16,324,011</b>	<b>100%</b>

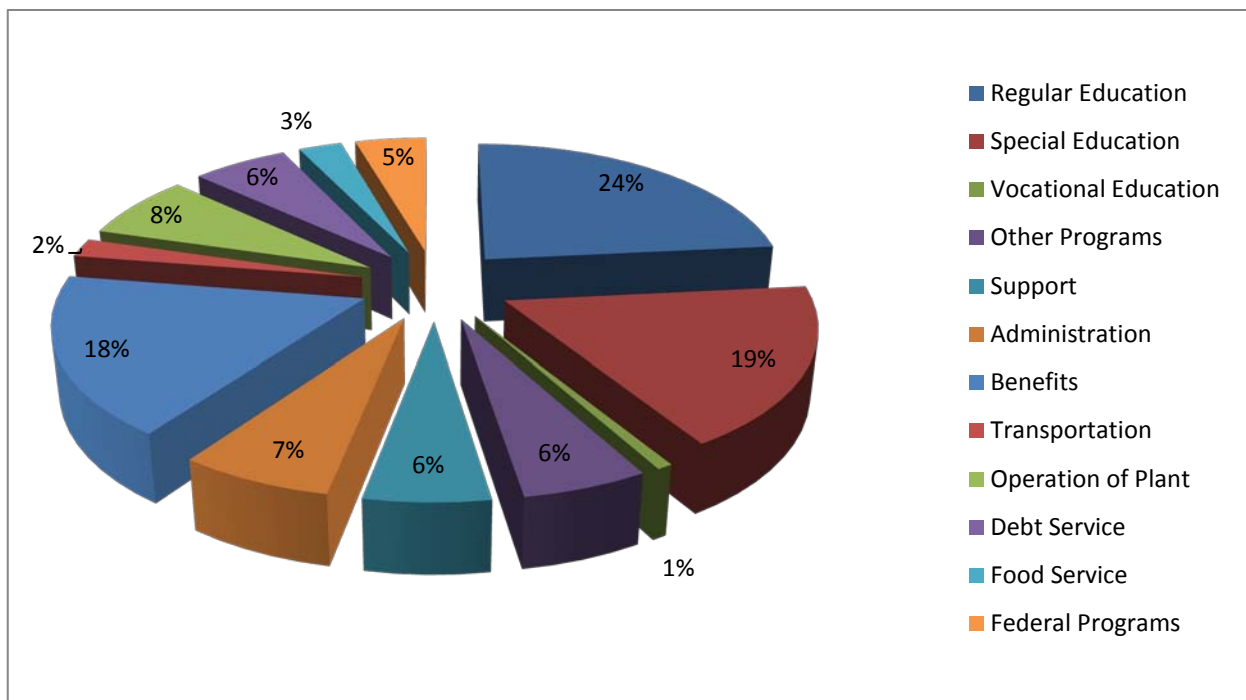


1. Special education includes instruction, psychological, speech-physical-occupational therapy, administration, & transportation.
2. Other programs include extracurricular & athletics.
3. Support includes attendance, guidance, health, improvement of instruction, & educational media.
4. Administration includes school board, superintendent, & school administration.
5. Benefits including FICA are for all staff. In previous years FICA was distributed throughout the budget.
6. Transportation includes regular, extracurricular, & athletic transport.

SCHOOL BUDGET FOR 2009-2010\*

\* Includes Only Epping Students

	<u>Budget</u>	<u>%</u>
Regular Education	\$3,883,494	24%
Special Education	\$2,951,745	19%
Vocational Education	\$117,360	1%
Other Programs	\$275,784	6%
Support	\$925,600	6%
Administration	\$1,129,643	7%
Benefits	\$2,922,540	18%
Transportation	\$342,800	2%
Operation of Plant	\$1,201,136	8%
Debt Service	\$993,041	6%
Food Service	\$450,064	3%
Federal Programs	<u>\$744,429</u>	<u>5%</u>
Total	\$15,937,636	100%

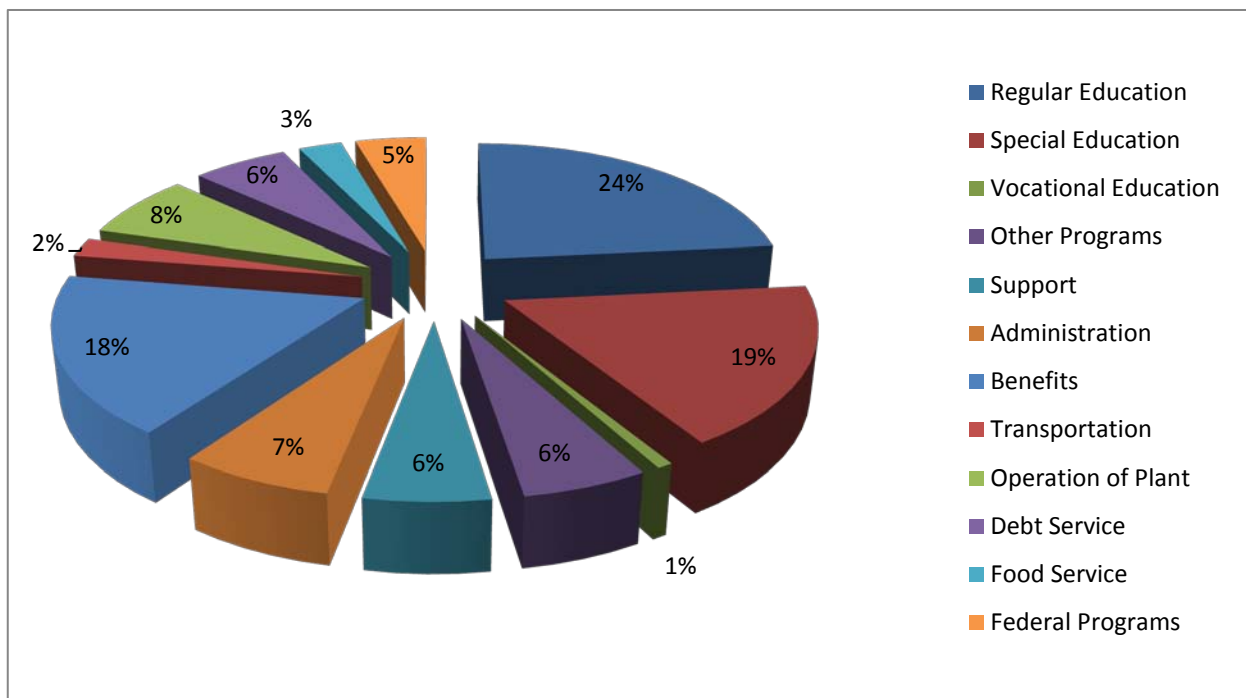


1. Special education includes instruction, psychological, speech-physical-occupational therapy, administration, & transportation.
2. Other programs include extracurricular & athletics.
3. Support includes attendance, guidance, health, improvement of instruction, & educational media.
4. Administration includes school board, superintendent, & school administration.
5. Benefits including FICA are for all staff. In previous years FICA was distributed throughout the budget.
6. Transportation includes regular, extracurricular, & athletic transport.

SCHOOL BUDGET FOR 2008-2009\*

\* Includes no Fremont High School Students

	<u>Budget</u>	<u>%</u>
Regular Education	\$4,215,611	27%
Special Education	\$3,079,270	20%
Vocational Education	\$145,920	1%
Other Programs	\$303,203	7%
Support	\$1,079,132	7%
Administration	\$1,252,053	8%
Benefits	\$2,295,330	15%
Transportation	\$338,081	2%
Operation of Plant	\$1,108,646	7%
Debt Service	\$997,541	6%
Food Service	\$427,270	3%
Federal Programs	<u>\$459,137</u>	<u>3%</u>
<b>Total</b>	<b>\$15,701,194</b>	<b>100%</b>

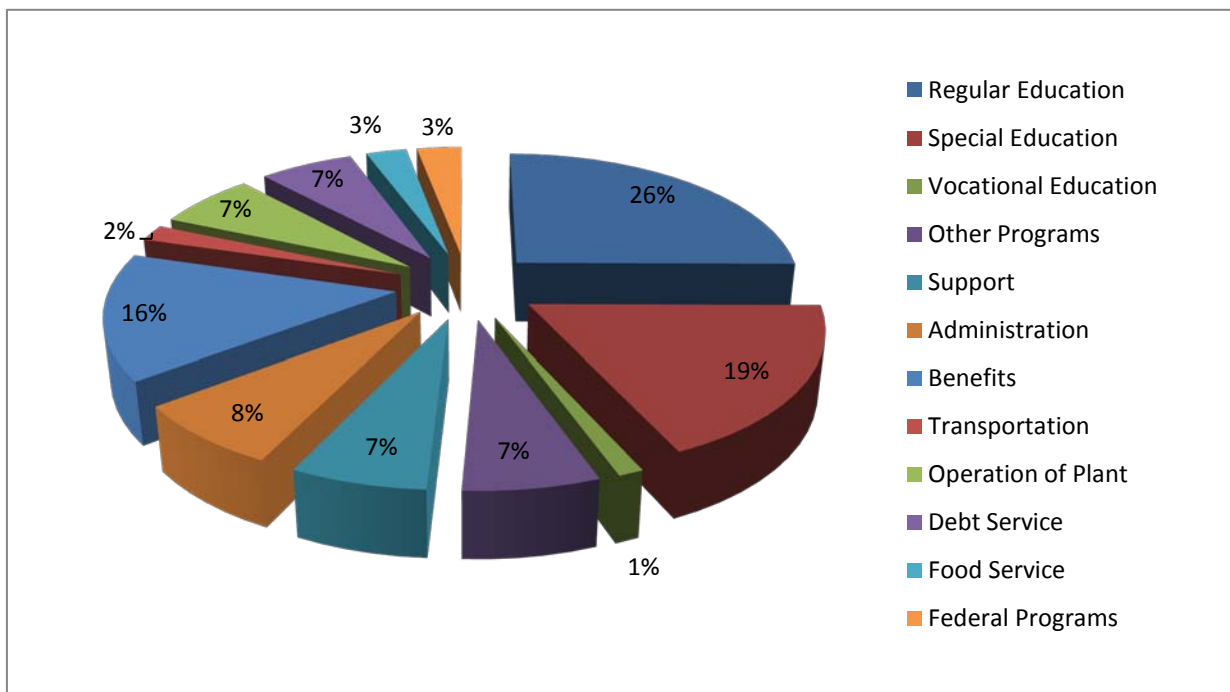


1. Special education includes instruction, psychological, speech-physical-occupational therapy, administration, & transportation.
2. Other programs include extracurricular & athletics.
3. Support includes attendance, guidance, health, improvement of instruction, & educational media.
4. Administration includes school board, office of superintendent, & school administration.
5. Benefits, excluding FICA, are for all staff.
6. Transportation includes regular, extracurricular, & athletic transport.

SCHOOL BUDGET FOR 2007-2008\*

\* Includes Fremont High School Students

	<u>Budget</u>	<u>%</u>
Regular Education	\$4,016,736	26%
Special Education	\$2,899,809	19%
Vocational Education	\$191,520	1%
Other Programs	\$310,617	7%
Support	\$1,021,167	7%
Administration	\$1,192,521	8%
Benefits	\$2,379,273	16%
Transportation	\$309,682	2%
Operation of Plant	\$1,051,913	7%
Debt Service	\$1,001,041	7%
Food Service	\$432,006	3%
Federal Programs	<u>\$475,906</u>	<u>3%</u>
Total	\$15,282,191	100%

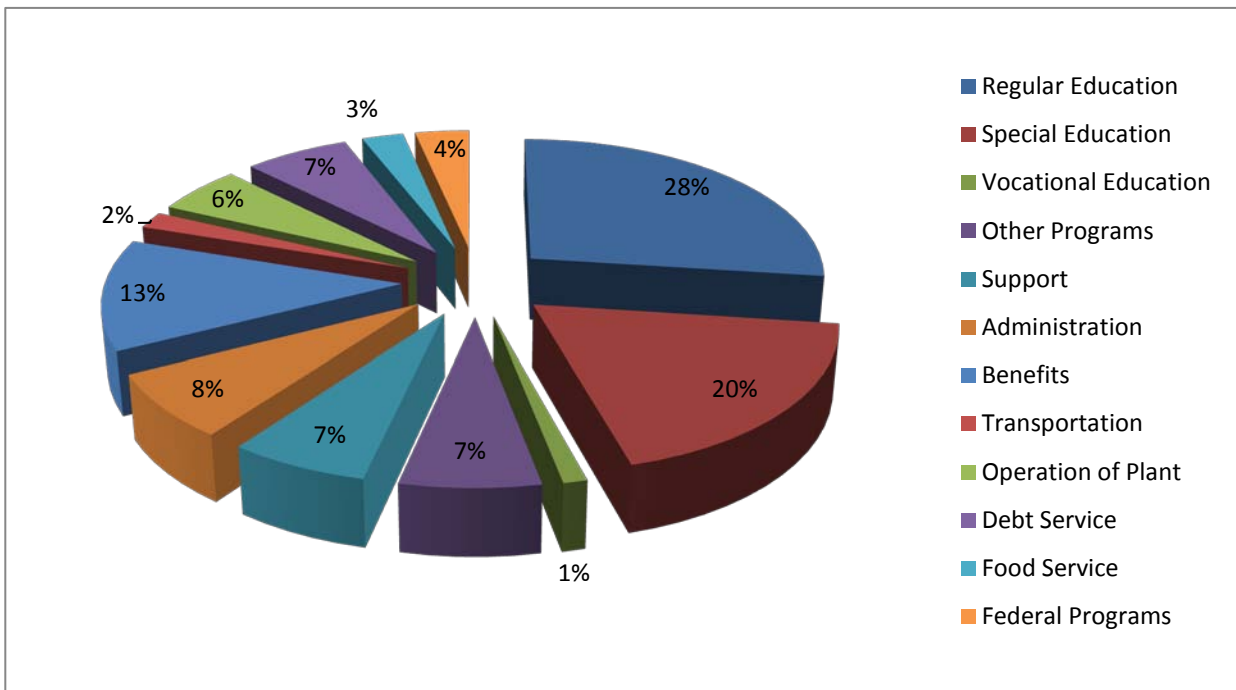


1. Special education includes instruction, psychological, speech-physical-occupational therapy, administration, & transportation.
2. Other programs include extracurricular & athletics.
3. Support includes attendance, guidance, health, improvement of instruction, & educational media.
4. Administration includes school board, office of superintendent, & school administration.
5. Benefits, excluding FICA, are for all staff.
6. Transportation includes regular, extracurricular, & athletic transport.

SCHOOL BUDGET FOR 2006-2007\*

\* Includes Fremont High School Students

	<u>Budget</u>	<u>%</u>
Regular Education	\$4,163,255	28%
Special Education	\$2,881,425	20%
Vocational Education	\$174,930	1%
Other Programs	\$250,109	7%
Support	\$1,017,554	7%
Administration	\$1,131,553	8%
Benefits	\$1,941,387	13%
Transportation	\$291,811	2%
Operation of Plant	\$841,770	6%
Debt Service	\$1,008,838	7%
Food Service	\$400,506	3%
Federal Programs	<u>\$519,887</u>	<u>4%</u>
<b>Total</b>	<b>\$14,623,025</b>	<b>100%</b>

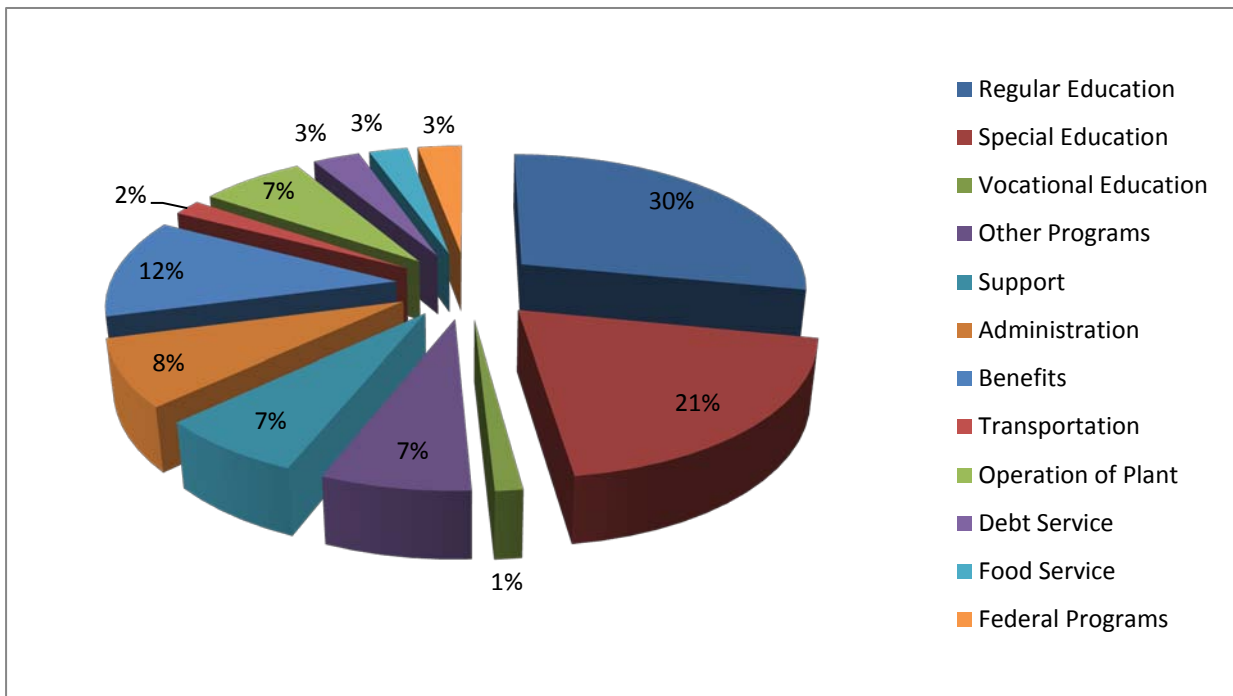


1. Special education includes instruction, psychological, speech-physical-occupational therapy, administration, & transportation.
2. Other programs include extracurricular & athletics.
3. Support includes attendance, guidance, health, improvement of instruction, & educational media.
4. Administration includes school board, office of superintendent, & school administration.
5. Benefits, excluding FICA, are for all staff.
6. Transportation includes regular, extracurricular, & athletic transport.

SCHOOL BUDGET FOR 2005-2006\*

\* Includes Fremont High School Students

	<u>Budget</u>	<u>%</u>
Regular Education	\$4,005,310	30%
Special Education	\$2,812,992	21%
Vocational Education	\$184,100	1%
Other Programs	\$178,452	7%
Support	\$992,378	7%
Administration	\$1,111,867	8%
Benefits	\$1,673,920	12%
Transportation	\$265,607	2%
Operation of Plant	\$981,560	7%
Debt Service	\$445,757	3%
Food Service	\$366,252	3%
Federal Programs	<u>\$417,492</u>	<u>3%</u>
<b>Total</b>	<b>\$13,435,687</b>	<b>100%</b>

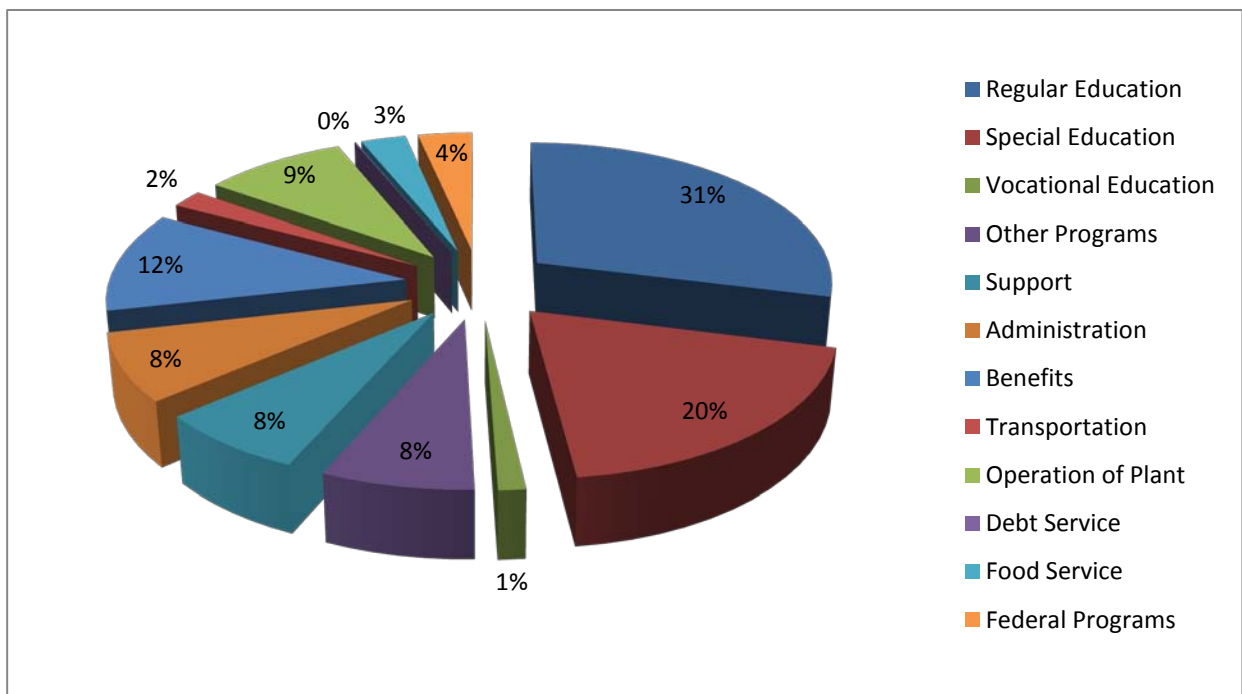


1. Special education includes instruction, psychological, speech-physical-occupational therapy, administration, & transportation.
2. Other programs include extracurricular & athletics.
3. Support includes attendance, guidance, health, improvement of instruction, & educational media.
4. Administration includes school board, office of superintendent, & school administration.
5. Benefits, excluding FICA, are for all staff.
6. Transportation includes regular, extracurricular, & athletic transport.

SCHOOL BUDGET FOR 2004-2005\*

\* Includes Fremont High School Students

	<u>Budget</u>	<u>%</u>
Regular Education	\$3,711,748	31%
Special Education	\$2,467,430	20%
Vocational Education	\$165,900	1%
Other Programs	\$193,321	8%
Support	\$916,229	8%
Administration	\$989,998	8%
Benefits	\$1,454,526	12%
Transportation	\$258,829	2%
Operation of Plant	\$1,145,128	9%
Debt Service	\$9,022	0%
Food Service	\$360,344	3%
Federal Programs	<u>\$434,878</u>	<u>4%</u>
Total	\$12,107,353	100%

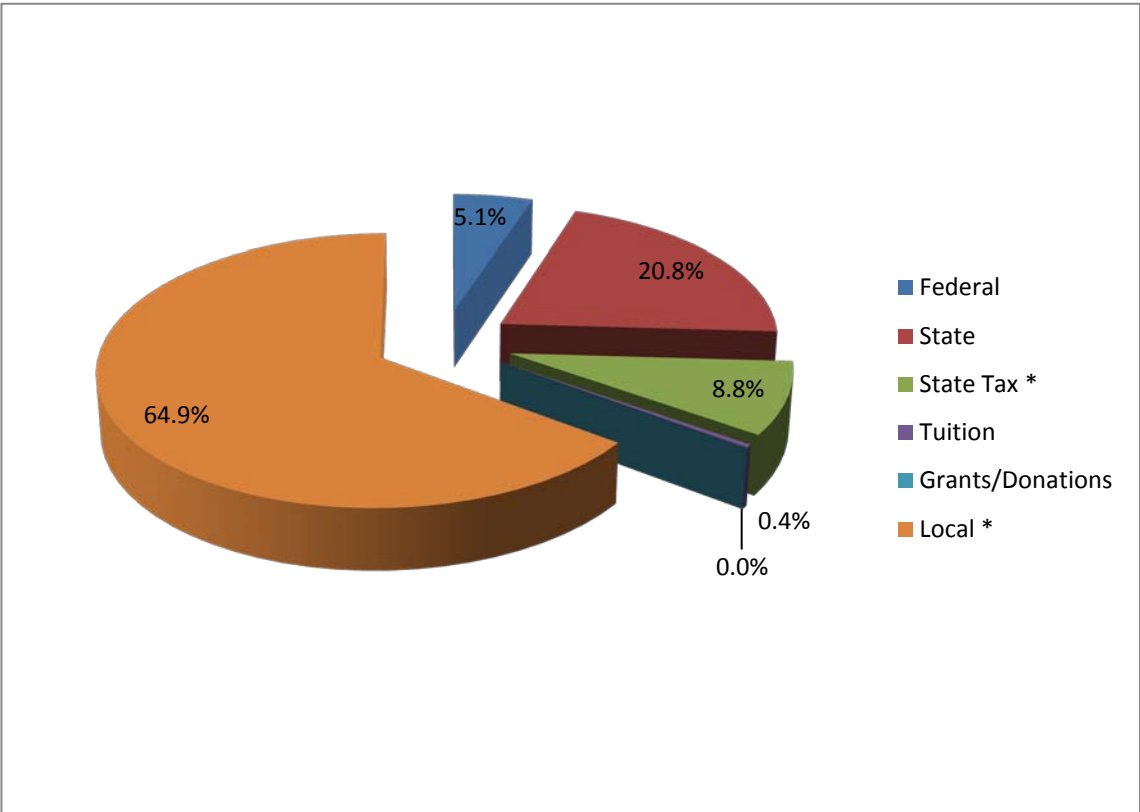


1. Special education includes instruction, psychological, speech-physical-occupational therapy, administration, & transportation.
2. Other programs include extracurricular & athletics.
3. Support includes attendance, guidance, health, improvement of instruction, & educational media.
4. Administration includes school board, office of superintendent, & school administration.
5. Benefits, excluding FICA, are for all staff.
6. Transportation includes regular, extracurricular, & athletic transport.

SCHOOL REVENUE FOR 2010-2011\*

\* Includes Only Epping Students

	<u>BUDGET</u>	<u>%</u>
Federal	\$837,837	5.1%
State	\$3,391,828	20.8%
State Tax *	\$1,432,645	8.8%
Tuition	\$62,500	0.4%
Grants/Donations	\$0	0.0%
Local *	<u>\$10,599,201</u>	<u>64.9%</u>
<b>Total</b>	<b>\$16,324,011</b>	<b>100%</b>

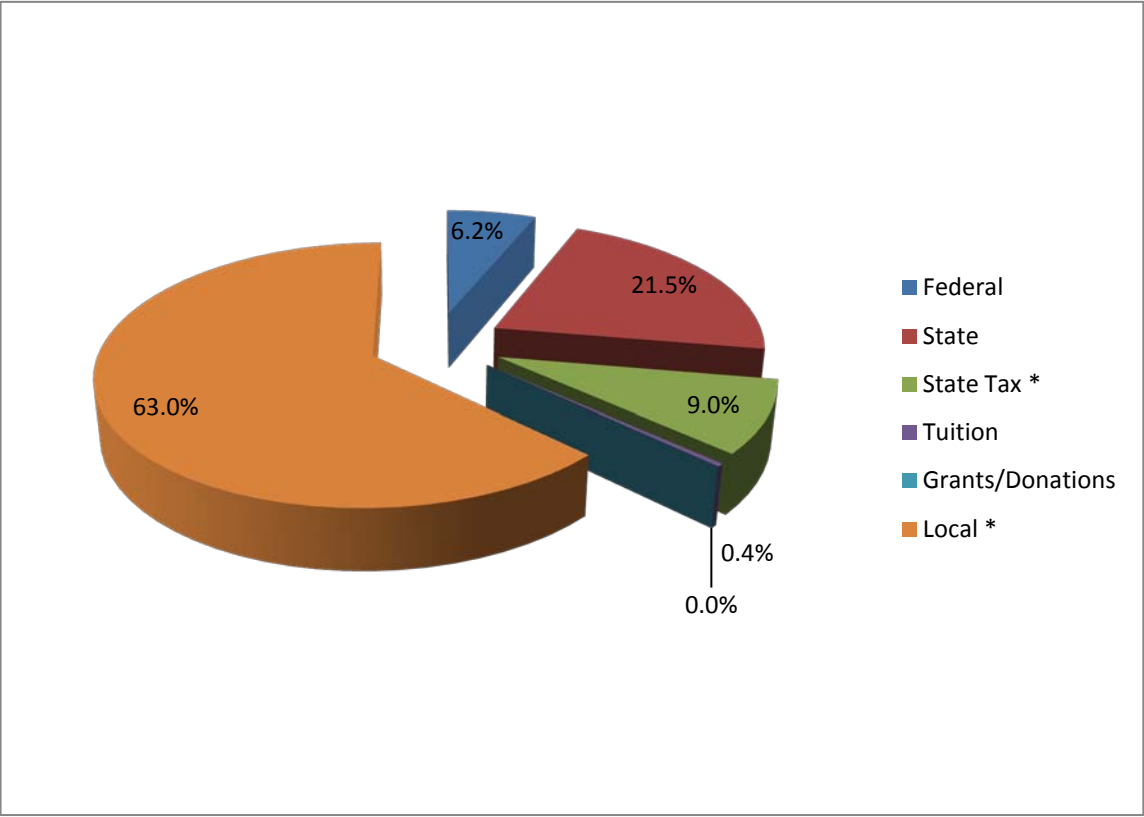


\* State tax is raised locally. Total local revenue equals 74%.

SCHOOL REVENUE FOR 2009-2010\*

\* Includes Only Epping Students

	<u>BUDGET</u>	<u>%</u>
Federal	\$990,929	6.2%
State	\$3,419,381	21.5%
State Tax *	\$1,432,645	9.0%
Tuition	\$57,803	0.4%
Grants/Donations	\$0	0.0%
Local *	<u>\$10,036,878</u>	<u>63.0%</u>
<b>Total</b>	<b>\$15,937,636</b>	<b>100%</b>

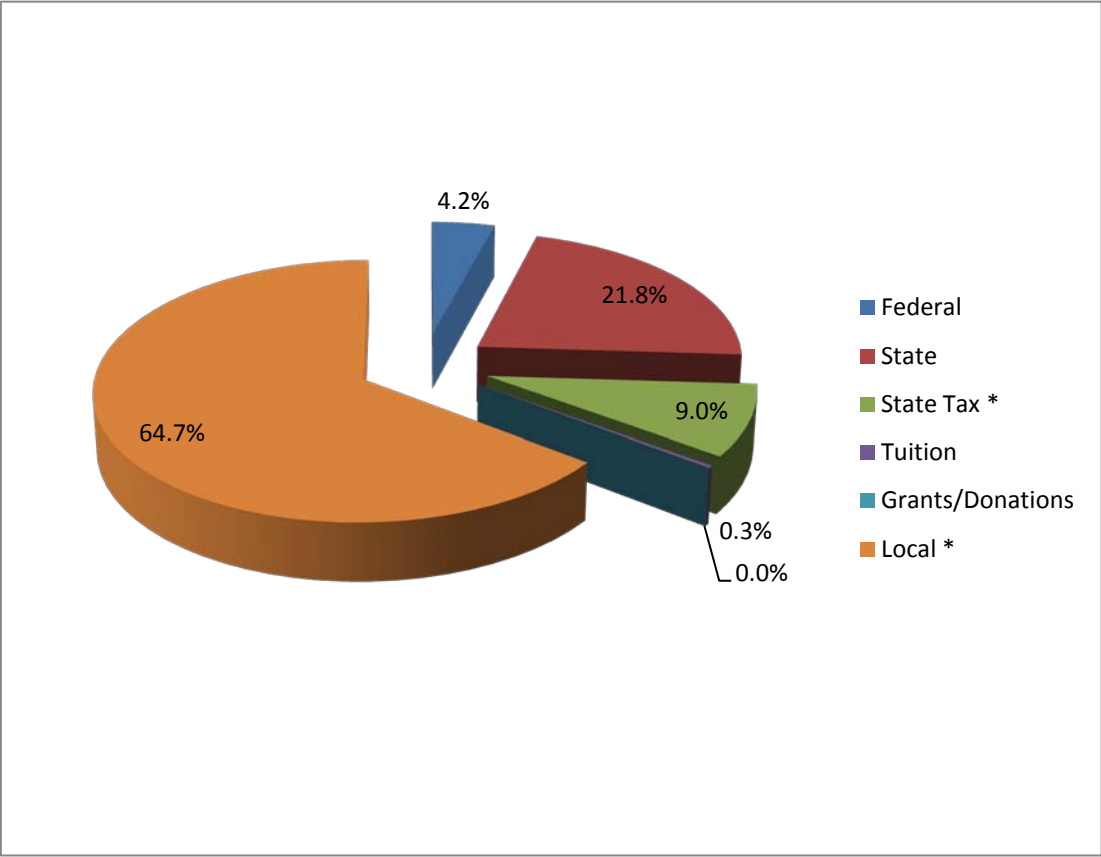


\* State tax is raised locally. Total local revenue equals 72%.

SCHOOL REVENUE FOR 2008-2009\*

\* Includes no Fremont High School Students

	<u>BUDGET</u>	<u>%</u>
Federal	\$661,637	4.2%
State	\$3,417,096	21.8%
State Tax *	\$1,414,316	9.0%
Tuition	\$46,900	0.3%
Grants/Donations	\$0	0.0%
Local *	<u>\$10,161,245</u>	<u>64.7%</u>
<b>Total</b>	<b>\$15,701,194</b>	<b>100%</b>

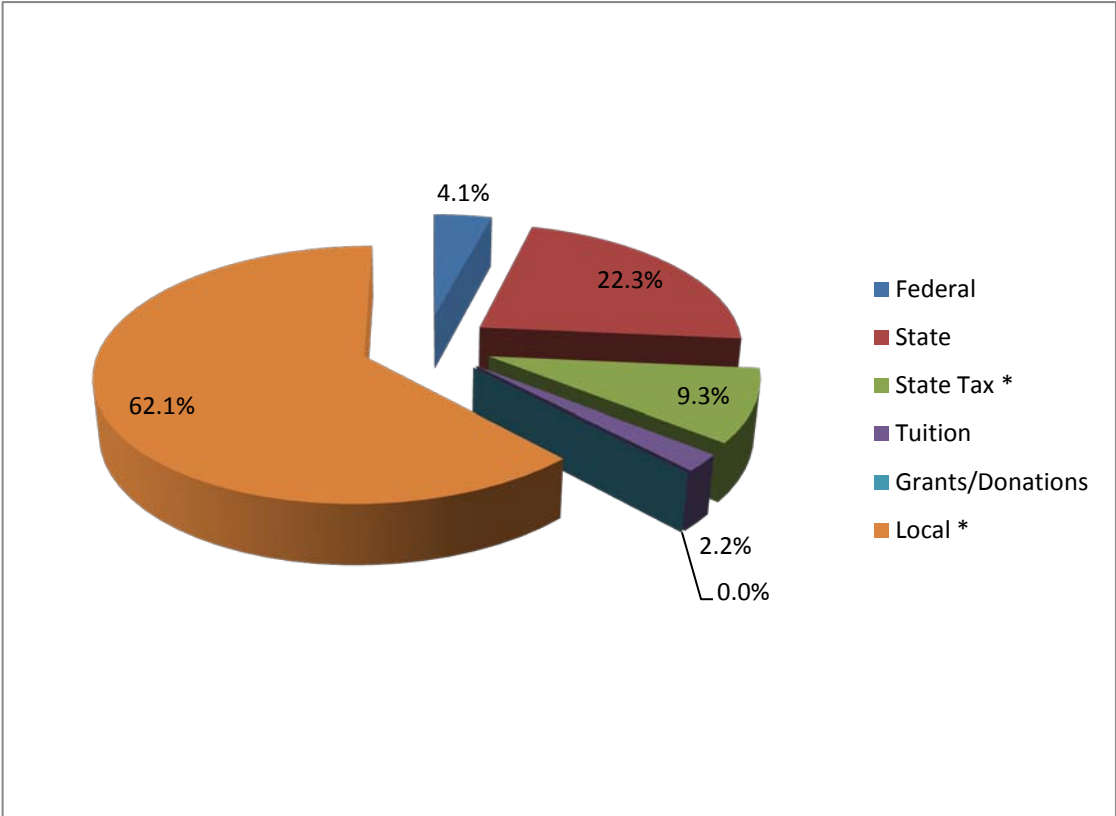


\* State tax is raised locally. Total local revenue equals 74%.

SCHOOL REVENUE FOR 2007-2008\*

\* Includes Fremont High School Students

	<u>BUDGET</u>	<u>%</u>
Federal	\$633,406	4.1%
State	\$3,410,459	22.3%
State Tax *	\$1,414,316	9.3%
Tuition	\$330,766	2.2%
Grants/Donations	\$0	0.0%
Local *	<u>\$9,493,244</u>	<u>62.1%</u>
<b>Total</b>	<b>\$15,282,191</b>	<b>100%</b>

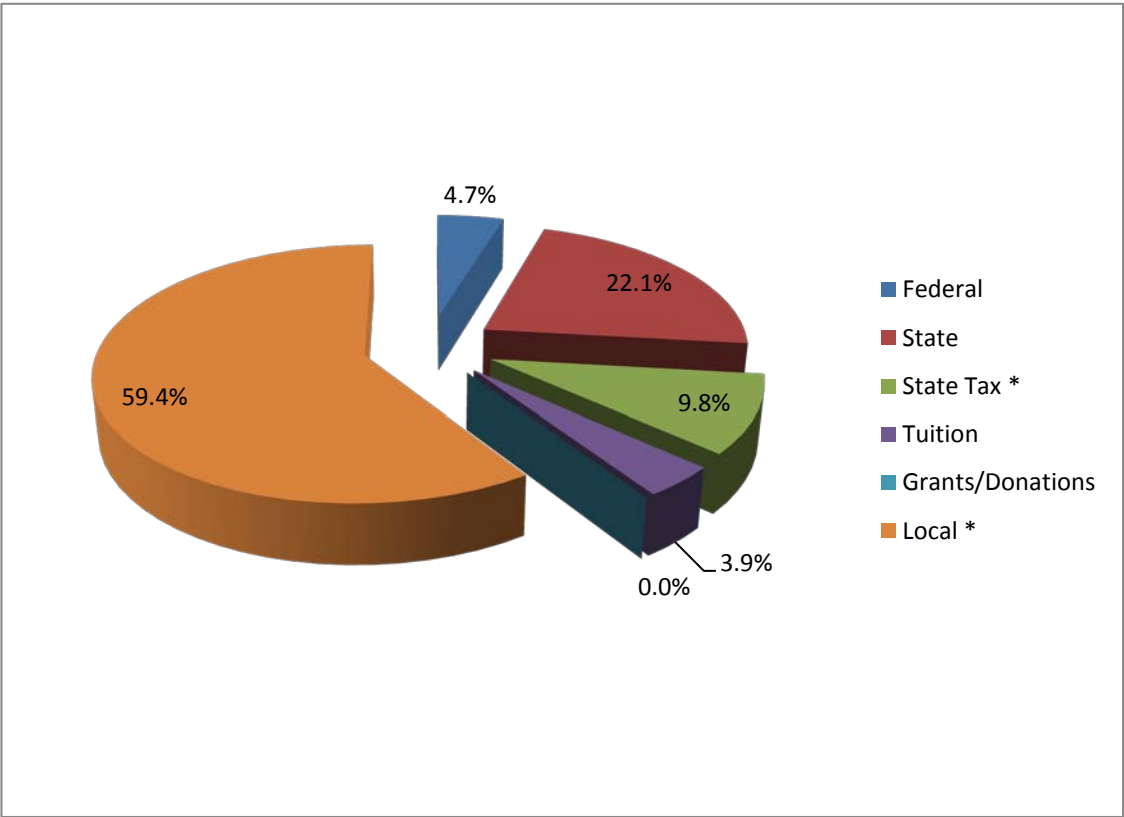


\* State tax is raised locally. Total local revenue equals 74%.

SCHOOL REVENUE FOR 2006-2007\*

\* Includes Fremont High School Students

	<u>BUDGET</u>	<u>%</u>
Federal	\$689,887	4.7%
State	\$3,231,353	22.1%
State Tax *	\$1,440,262	9.8%
Tuition	\$574,970	3.9%
Grants/Donations	\$0	0.0%
Local *	<u>\$8,686,553</u>	<u>59.4%</u>
<b>Total</b>	<b>\$14,623,025</b>	<b>100%</b>

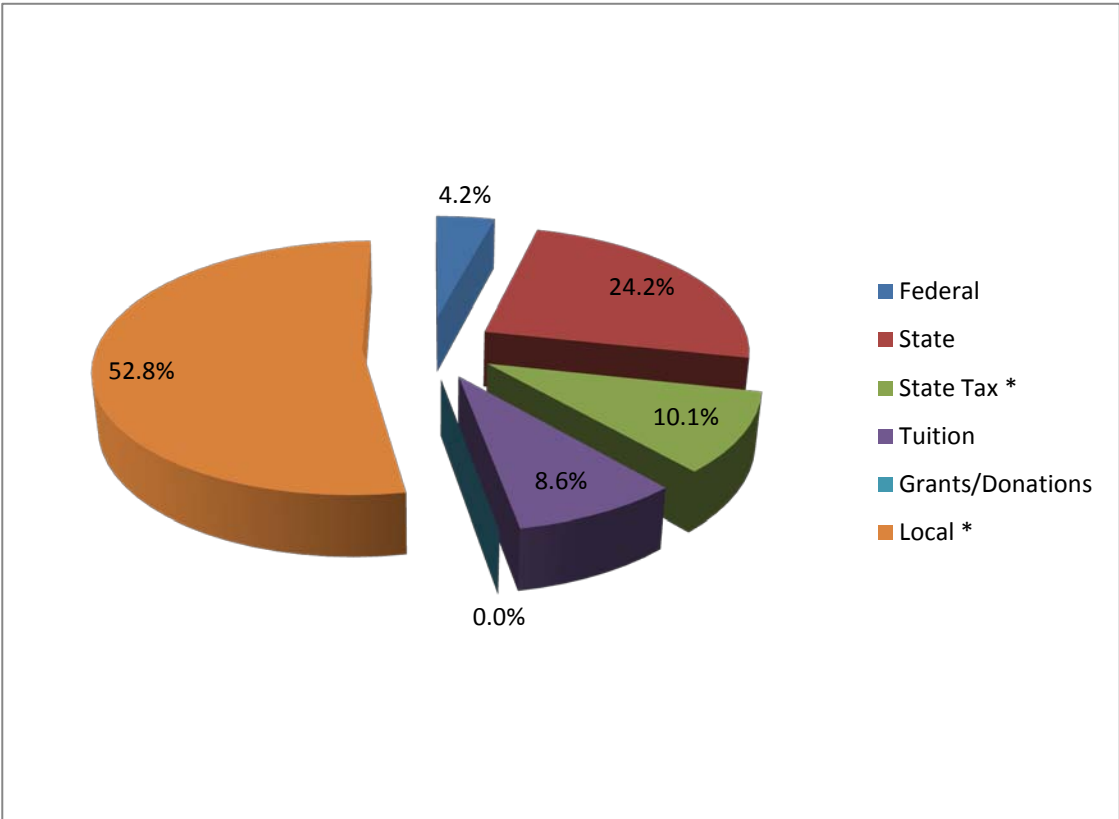


\* State tax is raised locally. Total local revenue equals 73%.

SCHOOL REVENUE FOR 2005-2006\*

\* Includes Fremont High School Students

	<u>BUDGET</u>	<u>%</u>
Federal	\$558,492	4.2%
State	\$3,257,854	24.2%
State Tax *	\$1,363,327	10.1%
Tuition	\$1,159,696	8.6%
Grants/Donations	\$0	0.0%
Local *	<u>\$7,096,318</u>	<u>52.8%</u>
<b>Total</b>	<b>\$13,435,687</b>	<b>100%</b>

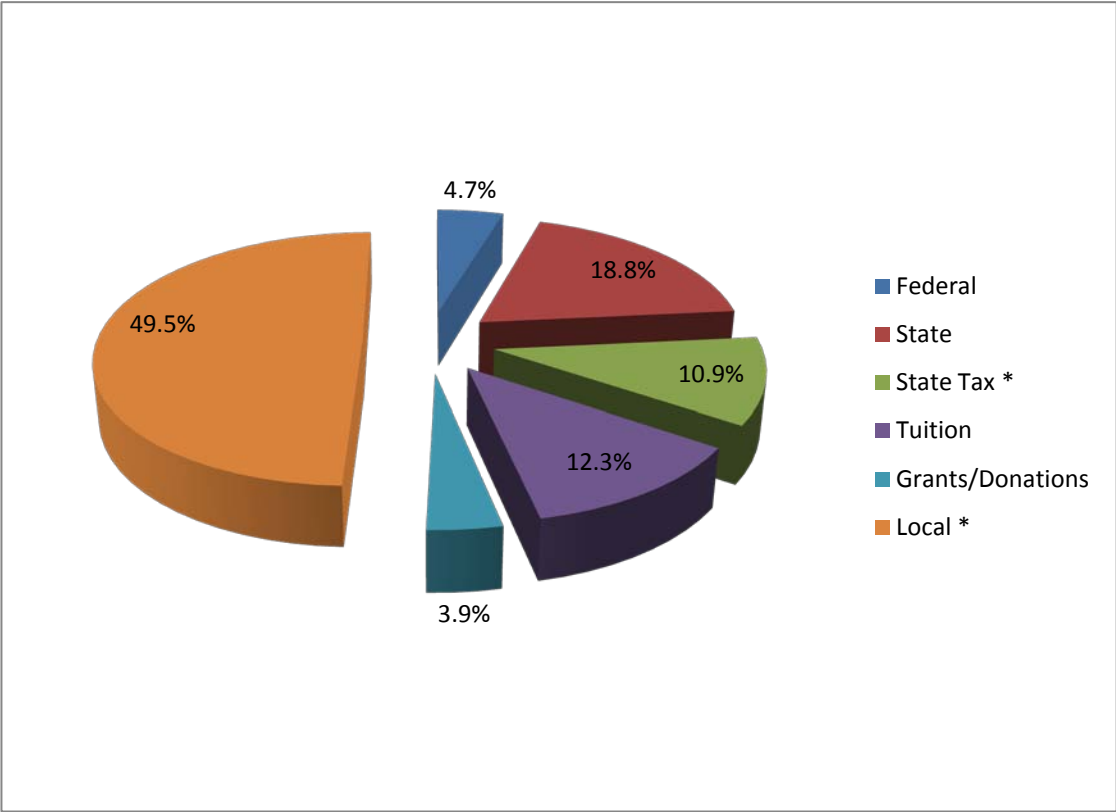


\* State tax is raised locally. Total local revenue equals 72%.

SCHOOL REVENUE FOR 2004-2005\*

\* Includes Fremont High School Students

	<u>BUDGET</u>	<u>%</u>
Federal	\$565,878	4.7%
State	\$2,275,473	18.8%
State Tax *	\$1,321,574	10.9%
Tuition	\$1,484,379	12.3%
Grants/Donations	\$467,500	3.9%
Local *	<u>\$5,992,549</u>	<u>49.5%</u>
<b>Total</b>	<b>\$12,107,353</b>	<b>100%</b>



\* State tax is raised locally. Total local revenue equals 72%.